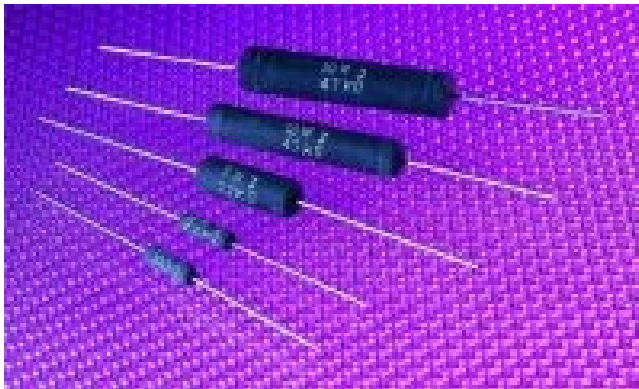


## AXIAL COATED SILICON RESISTORS

**ACS** SERIES



### FEATURES

- RESISTANCE TOLERANCES OFFERED FROM 0.05% TO 10%
- BOTH INDUCTIVE (W) AND NON-INDUCTIVE (N) RESISTORS ARE AVAILABLE
- RESISTANCE RANGE FROM R005 TO 100K
- TEMPERATURE RANGE - 55°C TO + 350°C
- AVAILABLE ON TAPE AND REEL OR BULK

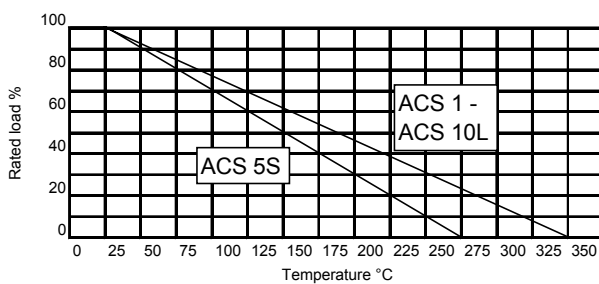
### ELECTRICAL SPECIFICATIONS

TYPE	WATTAGE RATING	MAX WORKING VOLTAGE (V)	RESISTANCE RANGE	
			W	N
ACS 1	1	20	R1 - 3K	R1 - 1.5K
ACS 2	2	100	R1 - 10K	R1 - 4K
ACS 3	3	200	R1 - 18K	R1 - 9K
ACS 5S	5	157	R005 - 80K	N/A
ACS 5L	5	400	R1 - 35K	R1 - 17K
AVS 7	7	450	R1 - 50K	R1 - 25K
ACS 10S	10	700	R1 - 70K	R1 - 35K
ACS 10L	10	800	R1 - 100K	R1 - 50K

Rated Continuous Working Voltage (RCWV) can be calculated by

$$RCWV = \sqrt{\text{Rated Wattage (W)} \times \text{Resistance Value (R)}}$$

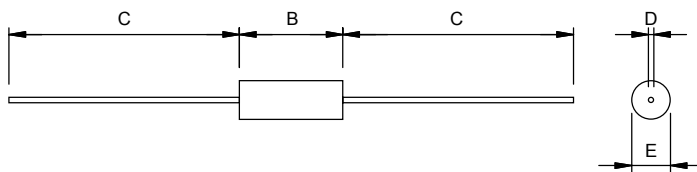
### DERATING CURVE



### SPECIFICATIONS

Resistance tolerance:	A (± 0.05%), B (± 0.1%), F (± 1%), G (± 2%), J (± 5%), K (± 10%)
Temperature coefficient:	<1R ± 90ppm/°C, 1R-10R ± 50ppm/°C, >10R ± 20ppm/°C
Insulation resistance:	1, 000M ohms Min.
Dielectric withstand voltage:	500V AC
Dielectric withstand voltage test method:	Resistor shall be covered with a conductive material which conforms to resistor surface so that 90% of the outer periphery is contacted
MIL types:	Available on request

### DIMENSIONS



TYPE	DIMENSIONS (MM)			
	B	C	D	E
ACS 1	10.0 ± 1.5	37.0 ± 1.0	0.7 ± 0.02	3.3 ± 0.8
ACS 2	13.5 ± 1.5	35.0 ± 1.0	0.8 ± 0.02	4.7 ± 0.8
ACS 3	15.7 ± 1.5	35.0 ± 1.0	0.8 ± 0.02	5.9 ± 0.8
ACS 5S	12.7 ± 1.0	35.0 ± 1.0	0.8 ± 0.02	4.78 ± 0.8
ACS 5L	22.5 ± 1.5	44.0 ± 1.0	1.0 ± 0.02	8.52 ± 0.8
AVS 7	24.5 ± 1.5	44.0 ± 1.0	1.0 ± 0.02	8.52 ± 0.8
ACS 10S	39.2 ± 1.5	35.0 ± 1.0	1.0 ± 0.02	8.52 ± 0.8
ACS 10L	46.2 ± 1.5	33.0 ± 1.0	1.0 ± 0.02	10.5 ± 0.8

### TYPICAL INDUCTANCE

As specified by MIL-R-39007, the maximum series inductance at 0.5MHz is as follows: -

TYPE	TYPICAL INDUCTANCE	
	<50 OHMS	>50 OHMS
ACS 1 - ACS 2	0.2µH	0.37µH
ACS 3 - ACS 5L	0.3µH	0.6µH
AVS 7 - ACS 10L	0.65µH	1.2µH

### ORDERING SYSTEM

ACS	3	W	600	F
SERIES	WATTAGE RATING	WINDING TYPE	RESISTANCE	TOLERANCE
TOLERANCE CODES		A = ± 0.05%	B = ± 0.1%	F = ± 1%
		G = ± 2%	J = ± 5%	K = ± 10%