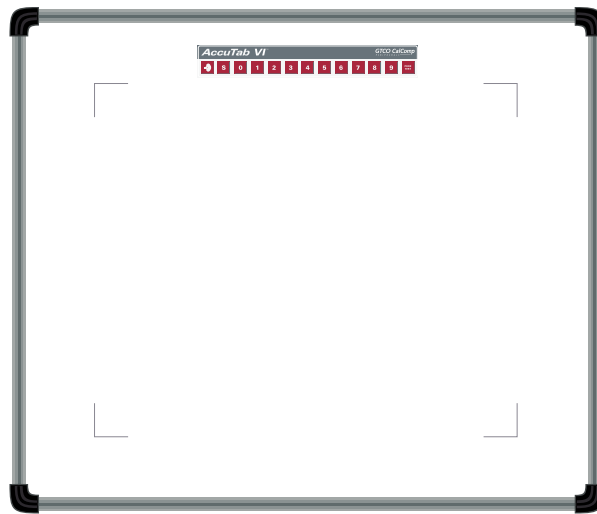


AccuTab VI™

User's Guide

Large Format, High Performance Digitizers



We at GTCO CalComp are proud of our digitizer products. We strive to bring you the best the technology has to offer. We urge you to visit our Web site, where we will post the latest information regarding updates and changes that may impact the information in this *User's Guide*.

Navigate to:

www.gtcocalcomp.com

GTCO CalComp
PERIPHERALS

Table of Contents

What is AccuTab VI?	5
Setup and Installation Overview	5
Parts Checklist	6
Optional Equipment	6
What You Will Need to Use AccuTab VI	7
PC Requirements	7
For a USB Installation	7
For an Optional Serial Installation	7
AccuTab VI Overview	8
Active Area	8
AccuSet Menu	8
Indicator Light	8
Transducer	8
Setting Up Your AccuTab VI	9
Preparing the AccuTab VI	9
Mounting on the Stand	9
Attaching the Optional Accessory Tray or Plan Holder	9
Software Configuration	10
Configuring Non-Wintab Applications	10
Installing the TabletWorks Driver	10
Hardware Configuration	10
Transducer Connection	10
USB Connection	11
Optional RS232 Serial Connection	12
Tablet Power-On	12
Using the AccuSet Menu	13
Resetting the AccuTab VI	14
Turning the Alarm Off and On	14
Testing the Active Area	14
Configuring Your AccuTab VI for Specific Applications	15
Example: Configuring for a Specific Application	15
Table 1: AccuSet Menu Codes for Selected Applications	16
Table 2: Configuration Details for AccuSet Menu Codes	17
AccuTab VI Tones	19
Table 3: AccuTab VI Tones	19
Introduction to the Tablet Configuration Utilities	20
Communication Options	20
Output Format Options	20
Mode Options	21

Using the Tablet Configuration Utilities	22
Learning the Basics	24
Using the Cursor	24
Learning Basic Movements	25
Clicking and Double-Clicking	25
Dragging	25
Caring for the Tablet and Transducer	26
Cleaning the Tablet	26
Cleaning the Cursor	26
Troubleshooting Guide	27
Tablet Checklist	28
Computer Checklist	28
Software Checklist	28
Does the tablet work with some software?	28
Did the software work in the past?	29
Troubleshooting Chart	30
Procedure A: Begin Troubleshooting	31
Procedure B: Troubleshooting	32
Returning your Tablet for Repair	34
Repackaging for Shipment	34
Appendix: Optional Transducers	35
The Transducers	35
Cursors	35
Pens	35
Basic Movements	36
Clicking and Double-Clicking	36
Dragging	36
Care and Maintenance	36
Replacing the Pen Tip	36
Replacing the Cordless Pen Batteries	37
Replacing the Cordless Cursor Batteries	37
Reducing Monitor Interference	38
Changing the Frequency of the Cordless Cursor	38
Changing the Frequency of the Cordless Pen	38
Regulatory Statements and Warranty	39
Radio and Television Interference	39
Canada	39
Declaration of Conformity	40
Japan	41
European Union Emissions Directive	41
European Union WEEE Directive	41
Bescheinigung des Herstellers/Importeurs	41
AccuTab VI Assurance of Performance	42
Limited Warranty for the AccuTab VI	42

What is the AccuTab VI?

Designed for the GIS professional, the **AccuTab VI** series offers a variety of large format digitizers with the highest level of accuracy on the market today. Guaranteed superior data integrity and compatibility with the leading GIS hardware and software packages—including Class One compatibility with ESRI's ARC/INFO® software—make the AccuTab VI the only choice for your GIS requirements. The integrity of the data produced by a digitizer can be only as good as the digitizer's underlying technology. Every aspect of both the design and the production of an AccuTab VI large-format digitizer has been engineered to meet one single objective – to provide the highest level of data integrity possible—guaranteed. This includes coordinate resolution, measurement accuracy, repeatability, product reliability and system compatibility.

To support our unique performance guarantee, a high precision automated measurement system is used to complete a Performance Verification on each AccuTab VI digitizer prior to its leaving our factory. This system generates a detailed performance verification report that is shipped with the unit.

Setup and Installation Overview

An integrated mounting channel around the perimeter of the digitizer facilitates the quick and easy mounting of the AccuTab VI on a pedestal or stand. The mounting channel can also be used for the attachment of accessories, such as the Accessory Tray and Plan Hold Down.

In order to send data from your AccuTab VI to your digitizing application, your AccuTab VI must be physically connected to your computer, and it must be able to transmit that data in such a way that the digitizing application recognizes and understands it. Before you set up your AccuTab VI, you should determine:

- The requirements of the digitizing software application you are using
- Whether your digitizing application requires software drivers to communicate with the AccuTab VI
- The hardware communications connection (USB or Serial) you will be using between the AccuTab VI and the computer

When the AccuTab VI is setup for a serial connection, it must be configured so that it can send data in a way the application software will recognize and understand. Different applications have different requirements when interacting with a digitizer. The AccuTab VI has been designed to provide the appropriate serial requirements for a variety of GIS applications using a simple code system. The AccuSet Menu located at the top of the AccuTab VI is used to enter the appropriate code for the software you are using. Table 1 in the *Using the AccuSet Menu* section of this manual lists the AccuSet Codes for a variety of GIS applications. All you

have to do is input the code for the application you are using, and the AccuTab VI will be able to communicate properly with the application software on your computer. Table 2 lists the configuration details for each AccuSet Code in Table 1.

If, for some reason, the communication requirements for your software cannot be found in the two tables provided in the AccuSet Menu section, the Tablet Configuration Utilities on the enclosed TabletWorks CD can be used to configure your AccuTab VI so it has the appropriate information it needs to communicate successfully with your software.

Parts Checklist

- ✓ AccuTab VI digitizing tablet
- ✓ 16-button high-accuracy, illuminated cursor
- ✓ USB Cable
- ✓ Universal Mounting Brackets
- ✓ A CD (TabletWorks drivers, documentation, or third party software drivers)
- ✓ *AccuTab VI User's Guide* (on the CD)
- ✓ *AccuTab VI Quick Start*
- ✓ Registration Card

Optional Equipment

- ✓ RS232 cable with 9-pin connector for serial connection
- ✓ Power supply – required only for a serial installation
- ✓ Transducer (corded or cordless pen, 4-button cursor, or 16-button cursor)
- ✓ Accessory Tray
- ✓ Plan Holder
- ✓ Table Feet
- ✓ Manual Lift/Manual Tilt Pedestal

What You Will Need to Use AccuTab VI

The AccuTab VI is equipped with a standard USB interface and has an optional RS232 serial interface. It is compatible with most industry-standard PCs. The TabletWorks CD contains drivers provided by GTCO CalComp and is the only software described in this manual. TabletWorks supports *reduced functionality Wintab* and *TabCon*-compatible applications. If you are not sure which drivers are required consult with your application vendor.

A USB connection requires the use of a TabletWorks driver, while the optional serial installation requires the use of a TabletWorks driver and/or a custom application program. After installing the TabletWorks software, the AccuTab VI will work with **all** Windows-based applications as a mouse, in addition to working as a digitizer with Windows-based applications that are specifically designed for use with digitizers.

PC Requirements

For a USB Installation

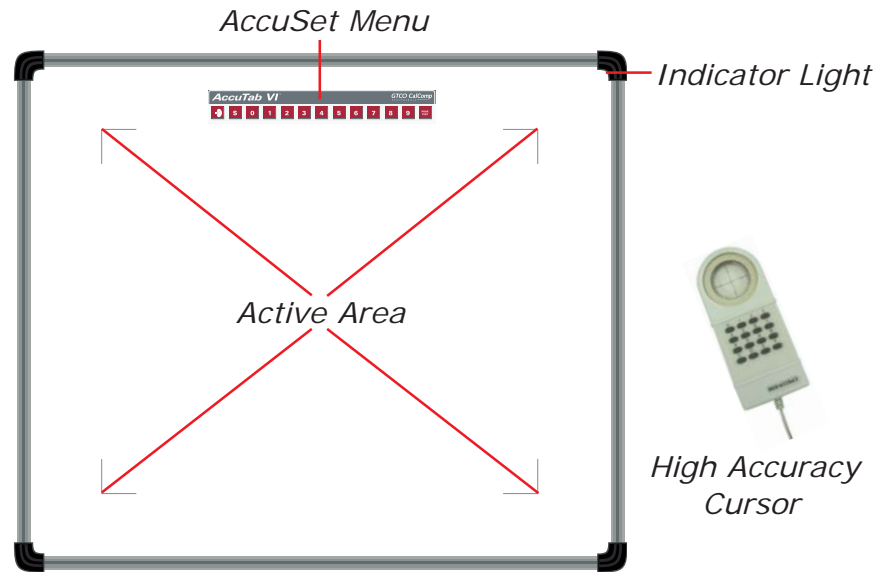
- Microsoft Windows 98se, Me, 2000, or XP
- One available USB port
- 10 MB of free disk space
- Application software that accepts digitizer input via the Wintab API or TabCon API

For an Optional Serial Installation

- Microsoft Windows 98, Me, NT 4.0, 2000, or XP
- One available RS232C serial communication port (Serial signal levels must conform to EIA RS232C specifications.)
- 10 MB of free disk space
- Application software that directly accepts digitizer input via the computer's RS232C serial port, or via the Wintab API or TabCon API

AccuTab VI Overview

The AccuTab VI digitizer consists of:



Active Area

The drawing area—the *Active Area*—is that portion of the tablet surface designated for digitizing. Its boundaries are marked at each corner by a right-angle crop mark.

AccuSet Menu

The AccuSet Menu is the row of keys located across the top of the digitizer. It provides a means of configuring your tablet so that it sends the appropriate information for a serial connection to the software you're using on your computer.

Indicator Light

The **power/proximity** LED in the upper right corner of the AccuTab VI frame is the Indicator light. It remains off when the power is On. However, it is solid green when the transducer is *in prox* (within the range) of the Active Area.

Transducer

The high performance AccuTab VI uses a 16-button high-accuracy, illuminated cursor as the system transducer. The corded high-accuracy cursor gets its power from the digitizer.

Setting Up Your AccuTab VI

The instructions below describe how to set up your AccuTab VI. Before you begin, please take a moment to fill out and mail the Warranty Registration Card.

Preparing the AccuTab VI

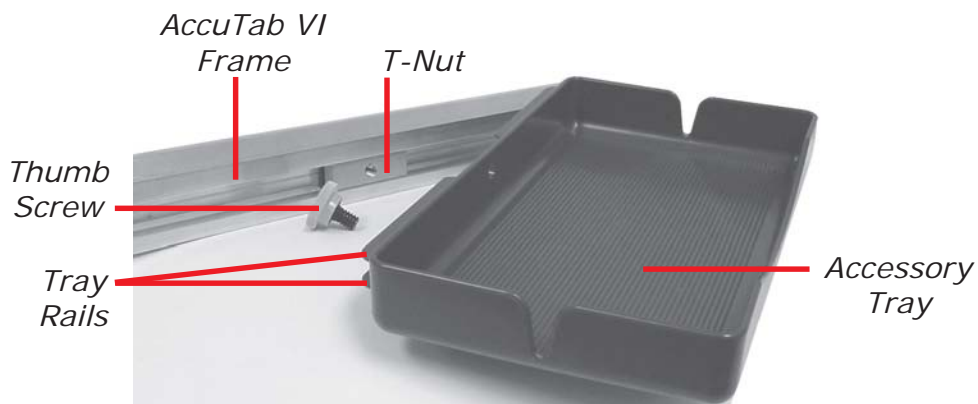
Mounting on the Stand

You can place your AccuTab VI on a table, desk, or drafting table. Or, you can mount your AccuTab VI on a stand or a pedestal. The tablet's Universal Mounting Brackets attach directly to those stands that have *tilt arms*. Stands with *tilt pads* require right-angle mounting brackets, which are attached to the tilt pads. The tablet's Universal Mounting Brackets are then attached to the right-angle mounting brackets. Center the tablet over the attached Universal Mounting Brackets and screw the Thumbscrews into the T-Nuts in the mounting channel in the tablet's frame.

Attaching the Optional Accessory Tray or Plan Holder

Additional T-Nuts have been included in the perimeter mounting channels on the AccuTab VI frame. You can position the Plan Holder or Accessory Tray where it is most convenient for you by attaching it to any one of the available T-Nuts. The following instructions and the graphic below detail the installation of the Accessory Tray.

Simply slide the Tray Rails into the channel and line up the hole in the tray with the hole in the T-Nut. Tighten the Thumb Screw to secure the Accessory Tray.



Software Configuration


Software drivers provide the communication bridge between your digitizing software application and your AccuTab VI. You should install only the drivers necessary for the AccuTab VI to work with your application software. If you are not sure which drivers are required, consult with your application vendor.

Configuring Non-Wintab Applications

Many application programs provide configuration information for specific digitizers. If the AccuTab VI digitizer is not listed, you can use the configuration for GTCO Digi-Pad Type 5 or Type 5A (T5/T5A), Roll-Up II, CalComp 3400, DrawingBoard, or Summagraphics Microgrid III.

Installing the TabletWorks Driver

Insert the CD into the CD-ROM drive on your computer. The installer will autoloading. If it doesn't, click on the **Start** button on the Windows Task Bar and select *Run* from the menu. Type `X:\setup.exe` (**X** represents the CD drive letter). Follow the onscreen prompts to complete the installation.

A TabletWorks icon  will display in the System Tray on the Windows Task Bar. Right-click on the icon to display the TabletWorks Menu, which provides access to all the TabletWorks features.

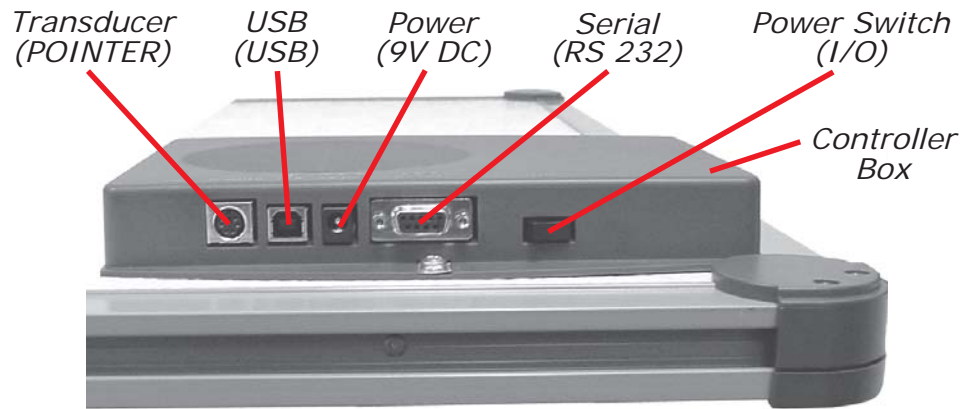
Hardware Configuration

When you use the USB interface, no hardware configuration is required. When you choose the optional serial interface, the AccuTab VI must be configured to send data in a format that is compatible with the application software. Different applications have different requirements when interacting with a digitizer. The AccuTab VI has been designed to provide the appropriate serial requirements for a wide variety of GIS, graphic, CAD, and estimating applications using a simple code system. The AccuSet Menu on the surface of the AccuTab VI is used to enter the appropriate code for the software you are using. A table in the *Using the AccuSet Menu* section of this manual lists the AccuSet Codes for a wide variety of applications.

Determine, if you haven't already, which communication connection you will be using—USB or the optional serial.

Transducer Connection


- 1 Connect the corded high-accuracy cursor to the appropriate jack on the digitizer's Connector Panel. The connector is keyed and will fit only the correct jack. Do not force it.



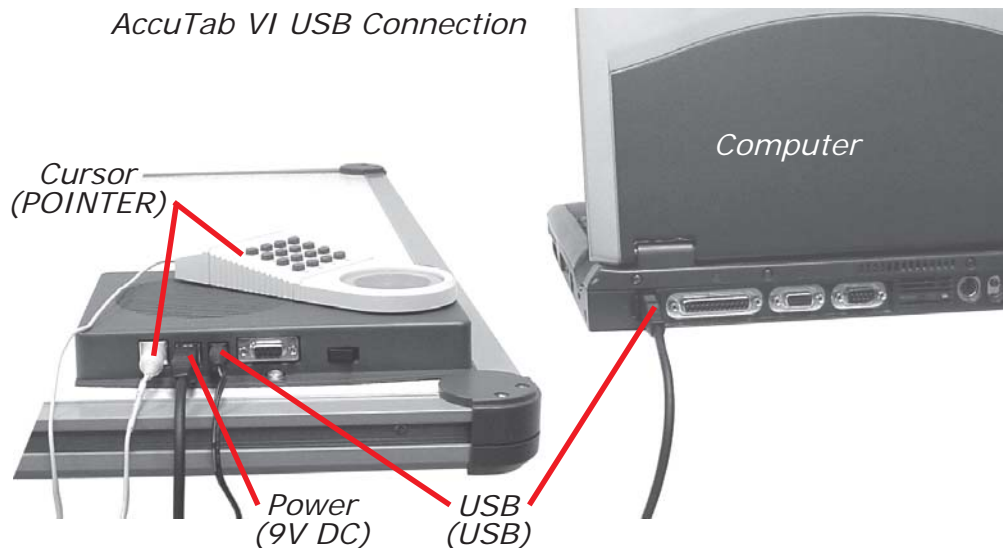
AccuTab VI Connector Panel

USB Connection

The AccuTab VI USB port connection is USB 1.1 and 2.0 compatible. When the digitizer is connected to the USB port, Windows will recognize that there is a new device connected. If Windows displays the *Found New Hardware* prompt, follow the onscreen instructions to complete the driver installation.

- 2 Connect the interface cable to the USB jack on the AccuTab VI Connector Panel. The connector is keyed and will fit only the correct jack. Do not force it. Connect the other end of the USB cable to any one of the USB ports  on your computer or USB hub.
- 3 Turn the Power Switch on. The digitizer will beep four short tones, indicating it has power. See the *AccuTab VI Tones* section on page 19 for a complete table of the AccuTab VI tones.

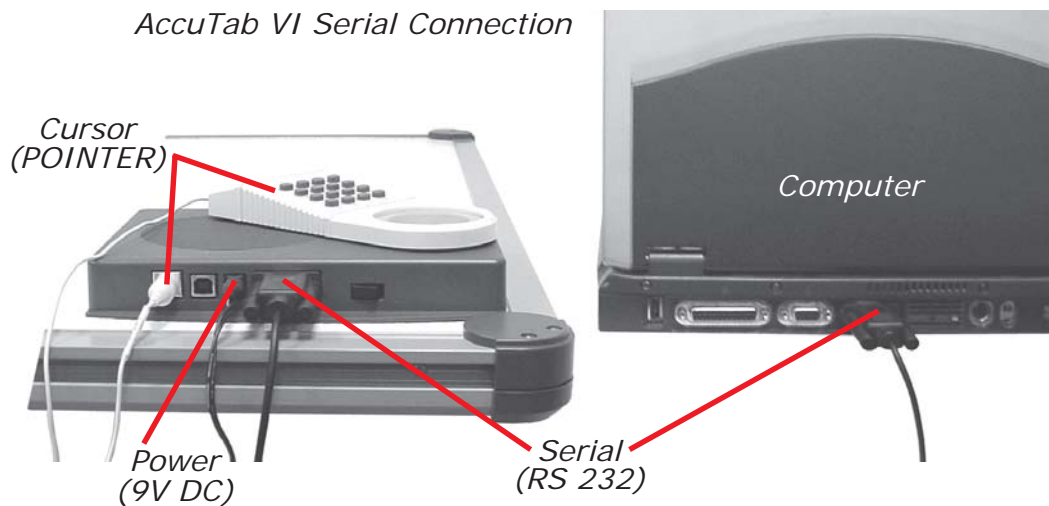
AccuTab VI USB Connection



Optional RS232 Serial Connection

- 1 Connect the RS232 serial cable to the serial jack on the Connector Panel. The connector is keyed and will fit only the correct jack. Do not force it. Connect the other end to an RS232 serial port on your computer.
- 2 Plug the power supply into an AC outlet. Connect the power supply to the appropriate jack on the AccuTab VI Connector Panel. Turn the Power Switch on. The digitizer will beep four short tones (see the *AccuTab VI Tones* section on page 19 for a complete table of AccuTab VI tones), indicating it has power.

AccuTab VI Serial Connection



Tablet Power-On

The AccuTab VI Power Switch is located at the rear of the tablet on the Controller Connector Panel. When turned On, the AccuTab VI's Indicator light will begin blinking and the tablet will beep four times. The Indicator light will glow steadily when the transducer is inside the Active Area of the tablet. When the transducer moves outside the Active Area, the Indicator light will go off.

Using the AccuSet Menu (RS232 Only)

The AccuSet Menu is the row of buttons printed across the top of the digitizer. It allows you to configure your AccuTab VI to send the appropriate information through an RS232 *serial connection* to the software you are using on your computer.



The AccuSet Menu is used to prepare the digitizer to receive specific, detailed custom configuration information from the Tablet Configuration Utilities for some serial installations.



In addition, for both serial and USB connections, the AccuSet Menu can be used to reset the AccuTab VI, turn the digitizer alarm Off and On, and test the grid, or *Active Area*. Use your cursor to click on the menu buttons to make your selections.


The **S** menu button initiates **Select Mode**. Two-digit numeric codes are entered after Select Mode is activated. The table of software-specific AccuSet Codes (Table 1) can be found on page 16. The configuration details of each AccuSet Code can be found in Table 2 on page 17.

Note

The Select Mode will not work with the USB interface. USB digitizers are used exclusively with Wintab drivers.

Most software supports Wintab using the TabletWorks drivers, whose *AccuSet Code* is **S 0 1** on the AccuSet Menu. The AccuTab VI comes from the factory with the AccuSet Code **S 0 1** pre-configured.

The  button toggles the digitizer alarm Off and On. The  button tests the digitizer grid in the Active Area.

When using the AccuSet Menu, a tone will sound indicating a successful selection when you click on the **S** button. Four tones will sound when you click on the  button. (See the *AccuTab VI Tones* section on page 19 for a complete table of the AccuTab VI tones.) The number buttons **0** through **9** are active only after clicking on the **S** button to activate Select Mode.

Resetting the AccuTab VI

The AccuTab VI can be reset by:


- Turning Off the Power Switch on the Connector Panel,
- Unplugging and replugging the power supply, or
- Clicking **S O O** on the AccuSet Menu.

When one of these events occurs, the AccuTab VI will revert to the configuration that was last defined. Any remote commands that were active before the reset will be lost.

Turning the Alarm Off and On



You can disable the alarm if you don't want to hear a tone each time the cursor button is pressed. When the alarm is off, you will still hear diagnostic and menu-related tones.

To turn the alarm Off and On:

- To toggle the tones On or Off, click on the  button on the AccuSet Menu.

Testing the Active Area

To test the AccuTab VI grid, or Active Area:

- 1 Using your cursor, click on the  button to activate the test.
- 2 Move your cursor around in the Active Area. If there is a break in the grid, or the cursor is out of prox, the digitizer will beep.
- 3 Reclick the  button to end the test.

Note

The following is relevant only for RS232 serial installations. USB does not require configuration.

Configuring Your AccuTab VI for Specific Applications

To configure your AccuTab VI for use with specific applications:

- 1 In Table 1, find the application program you will be using with your AccuTab VI. Note the corresponding AccuSet Code.
 - If your application program is not listed in Table 1, find the configuration settings in Table 2 that your application program requires and use the corresponding AccuSet Code.
 - If an appropriate AccuSet Code is not listed in Table 2, use the Tablet Configuration Utilities to configure your AccuTab VI.
- 2 On the AccuSet Menu, click on the **S** button, then click on the two digits of the AccuSet Code indicated for your application.

You will hear four short tones after a successful menu configuration.

Example: Configuring for a Specific Application

Suppose you wanted to configure your AccuTab VI to operate with Autodesk's AutoCAD application. You would:

- 1 Find the entry for AutoCAD in Table 1. The AccuSet Code is **S 0 1**.
- 2 Click on the **S** button on the AccuSet Menu. You will hear one short tone, indicating the digitizer is in **Select Mode**.
- 3 Click on the **0** button on the AccuSet Menu. You will hear one short tone. This enters the first digit of the AccuSet Code for AutoCAD.
- 4 Click on the **1** button on the AccuSet Menu. This enters the second digit of the AccuSet Code for AutoCAD.

You will hear four short tones, indicating that the configuration is complete. The AccuTab VI is now configured to operate with AutoCAD. Select Mode is no longer active. You can begin digitizing.

Note

For more information about digitizer software application driver requirements, please go to the Technical Support section of the GTCO CalComp Web site.

Table 1: AccuSet Menu Codes for Selected Applications

Program	Company	AccuSet Code
ARC/CAD	ESRI	01
ARC/INFO (DOS)	ESRI	12
ARC/INFO	ESRI	01
ARC/GIS	ESRI	01
ARC/View	ESRI	01
AutoCAD	Autodesk, Inc.	01
GTCOTEST (default)	GTCO CalComp	99
GTCO TabletWorks	GTCO CalComp	01
IBM GFIS	IBM	55
IDRISI	Clark University	53
Imagine 8.X	ERDAS, Inc.	04
Micro Lynx Plus	Lynx GeoSystems	54
Microstation PC	Intergraph Corp.	02
TOSCA	Clark University	53
generic	GTCO CalComp	05 thru 17
generic	CalComp	18 thru 39
generic	Summagraphics	40 thru 52

Table 2: Configuration Details for AccuSet Menu Codes

Code	Commun.	Output Options	ASCII Options
<p>Note Max \approx 100 coordinates/second lpi = lines per inch lpm = lines per millimeter</p>			
01	9600,N,8,1	GTCO Binary, 1000 lpi, Cont, 100	
02	9600,N,8,1	GTCO Binary, 1000 lpi, Cont Incr	
03	9600,N,8,1	GTCO ASCII, 1000 lpi, Point, Alarm	Pb, Sp, CR, LF
04	4800,N,8,1	GTCO ASCII, 1000 lpi, Point, Alarm	Pb, CR, LF
05	9600,N,8,1	GTCO Binary, 2000 lpi, Cont, 100, Alarm	
06	9600,N,8,1	GTCO Binary, 4000 lpi, Cont, 100, Alarm	
07	9600,N,8,1	GTCO Binary, 100 lpm, Cont, 100, Alarm	
08	9600,N,8,1	GTCO ASCII, 1000 lpi, Cont, 50, Alarm	Pb, Sp, CR, LF
09	9600,N,8,1	GTCO ASCII, 1000 lpi, Line, 50, Alarm	Pb, Sp, CR, LF
10	9600,N,8,1	GTCO ASCII, 1000 lpi, Line Incr, 50, Alarm	Pb, Sp, CR, LF
11	9600,N,8,1	GTCO ASCII, 1000 lpi, Cont Incr, 50, Alarm	Pb, Sp, CR, LF
12	9600,N,8,1	GTCO ASCII, 2000 lpi, Point, Alarm	Pb, Sp, CR, LF
13	9600,N,8,1	GTCO ASCII, 2000 lpi, Cont, 50, Alarm	Pb, Sp, CR, LF
14	9600,N,8,1	GTCO ASCII, 4000 lpi, Point, Alarm	Pb, Sp, CR, LF
15	9600,N,8,1	GTCO ASCII, 4000 lpi, Cont, 50, Alarm	Pb, Sp, CR, LF
16	9600,N,8,1	GTCO ASCII, 100 lpm, Point, Alarm	Pb, Sp, CR, LF
17	9600,N,8,1	GTCO ASCII, 100 lpm, Cont, 50, Alarm	Pb, Sp, CR, LF
18	9600,N,8,1	CalComp ASCII 1, 1000 lpi, Point, Alarm	
19	9600,N,8,1	CalComp ASCII 1, 1000 lpi, Line, 50, Alarm	
20	9600,N,8,1	CalComp ASCII 1, 1000 lpi, Cont, 50, Alarm	
21	9600,N,8,1	CalComp ASCII 1, 1000 lpi, Line Incr, 50, Alarm	
22	9600,N,8,1	CalComp ASCII 1, 1000 lpi, Cont Incr, 50, Alarm	
23	9600,N,8,1	CalComp ASCII 2, 1000 lpi, Point, Alarm	
24	9600,N,8,1	CalComp ASCII 2, 1000 lpi, Line, 50, Alarm	
25	9600,N,8,1	CalComp ASCII 2, 1000 lpi, Cont, 50, Alarm	
26	9600,N,8,1	CalComp ASCII 3, 1000 lpi, Point, Alarm	
27	9600,N,8,1	CalComp ASCII 3, 1000 lpi, Line, 50, Alarm	
28	9600,N,8,1	CalComp ASCII 3, 1000 lpi, Cont, 50, Alarm	
29	9600,N,8,1	CalComp ASCII 4, 1000 lpi, Point, Alarm	
30	9600,N,8,1	CalComp ASCII 4, 1000 lpi, Line, 50, Alarm	
31	9600,N,8,1	CalComp ASCII 4, 1000 lpi, Cont, 50, Alarm	
32	9600,N,8,1	CalComp ASCII 4, 1000 lpi, Line Incr, 50, Alarm	
33	9600,N,8,1	CalComp ASCII 4, 1000 lpi, Cont Incr, 50, Alarm	
34	9600,N,8,1	CalComp ASCII 4, 2000 lpi, Point, Alarm	
35	9600,N,8,1	CalComp ASCII 4, 2000 lpi, Cont, 50, Alarm	

Code	Commun.	Output Options	ASCII Options
36	9600,N,8,1	CalComp ASCII 4, 4000 lpi, Point, Alarm	
37	9600,N,8,1	CalComp ASCII 4, 4000 lpi, Cont, 50, Alarm	
38	9600,N,8,1	CalComp ASCII 4, 100 lpmm, Point, Alarm	
39	9600,N,8,1	CalComp ASCII 4, 100 lpmm, Cont, 50, Alarm	
40	9600,N,8,1	Summa Binary, 1000 lpi, Cont, 100, Alarm	
41	9600,N,8,1	Summa Binary, 2000 lpi, Cont, 100, Alarm	
42	9600,N,8,1	Summa Binary, 4000 lpi, Cont, 100, Alarm	
43	9600,N,8,1	Summa Binary, 100 lpmm, Cont, 100, Alarm	
44	9600,N,8,1	Summa ASCII, 1000 lpi, Point, Alarm	Dp, CR, LF
45	9600,N,8,1	Summa ASCII, 1000 lpi, Line, 50, Alarm	Dp, CR, LF
46	9600,N,8,1	Summa ASCII, 1000 lpi, Cont, 50, Alarm	Dp, CR, LF
47	9600,N,8,1	Summa ASCII, 1000 lpi, Line Incr, 50, Alarm	Dp, CR, LF
48	9600,N,8,1	Summa ASCII, 1000 lpi, Cont Incr, 50, Alarm	Dp, CR, LF
49	9600,N,8,1	Summa ASCII, 40 lpmm, Point, Alarm	Dp, CR, LF
50	9600,N,8,1	Summa ASCII, 40 lpmm, Cont, 50, Alarm	Dp, CR, LF
51	9600,N,8,1	Summa ASCII, 2000 lpi, Cont, 50, Alarm	CR, LF
52	9600,N,8,1	Summa ASCII, 4000 lpi, Cont, 50, Alarm	CR, LF
53	9600,N,8,1	GTCO ASCII, 1000 lpi, Cont, 100, Alarm	Pb, Sp, CR, LF
54	9600,N,8,1	GTCO ASCII, 40 lpmm, Point	Pb, CR, LF
55	9600,O,7,2	GTCO ASCII, 1000 lpi, Cont, 200, Alarm	Pb, CR
86	*Special		
87	*Special		
88	*Special		
89	*Special		
90-98		User configuration storage locations	
99	9600,N,8,1	GTCO Binary, 1000 lpi, Cont Max	

***86-89 require special firmware to activate.**

AccuTab VI Tones

The AccuTab VI produces an *alarm* in the form of audio tones to inform you of various events. The table below describes the kinds of tones you might hear while operating the digitizer.

Table 3: AccuTab VI Tones

Length	Number of times	Meaning
Short	Once	Cursor switch pressed, if the alarm tone is enabled
Medium	Four at power up	Diagnostics passed
Medium	Four	Successful end of menu mode
Medium	Four/Three	Alarm tone toggles On/Off
Medium	Three	AccuSet Code aborted

Short = 1/16 second

Medium = 1/4 second

Long = 1/2 second



You might hear tones produced by the AccuTab VI which are actually sent by your application program. (Programs can send commands to the digitizer to turn the audio tone generator On and Off.) If you hear tones during digitizing, and they don't correspond to the tones listed in the table above, they are produced by the application program.



This information applies to serial installations only.

Introduction to the Tablet Configuration Utilities

The **AccuTab VI** with its Controller uses the Tablet Configuration Utilities to control baud rate, data format and other operating characteristics for the RS232 interface. It is used to relay configuration information to the AccuTab VI in those cases where Table 1 and Table 2 do not supply the information or an AccuSet Menu Code for the graphic application software you are using.

The configuration parameters for the AccuTab VI are divided into three categories:

- Communication Options
- Output Format Options
- Mode Options

Communication Options

- **Baud** The rate, in bits/second, at which characters are transmitted across the RS232C serial interface. Choices are: 1200, 2400, 4800, 9600, 19200, or 38400.
- **Data Bits** Data bits represent the actual data being sent from one device to another. Both devices must be set for the same number of data bits. Choices are: Seven (7), or Eight (8).
- **Stop Bits** Each character has one or two stop bits, which tell the receiving device that a character is complete. The number of stop bits usually does not matter. Setting for two stop bits instead of one may overcome a mismatch in parity or data bits. Choices are: One (1), or Two (2).
- **Parity** One bit can be allocated for parity (parity is a simple error-detecting scheme). Both devices (sending and receiving) must be set for the same parity—either odd parity, or even parity—or they must be set for no parity. Choices are: None (N), Even (E), or Odd (O).

Output Format Options

- **GTCO** Selects GTCO-compatible formats. See Advanced Programming Information in the AccuTab VI Online Help for greater detail on GTCO format structure. Choices are: Binary, or ASCII.
- **CalComp** Selects CalComp-compatible formats. See Advanced Programming Information in the AccuTab VI Online Help for greater

detail on CalComp format structure. Choices are: Binary, ASCII 1, ASCII 2, ASCII 3, or ASCII 4.

- **Summa** Selects Summagraphics-compatible formats. See Advanced Programming Information in the AccuTab VI Online Help for greater detail on Summagraphic format structure. Choices are: Binary, or ASCII.

ASCII formats can be modified by including, or excluding, a button code, space, decimal point, carriage return, or line feed, depending on whether GTCO, CalComp, or Summa formats have been selected.

- **Button** Defines whether the Pushbutton (Pb) value is included in the ASCII output report. This option is available only with GTCO formats. Choices are: Include, or Exclude.
- **Space** Defines whether the Space (Sp) character (hex 20) is included in the ASCII output report as a delimiter between the X and Y coordinate values. This option is available only in GTCO formats. Choices are: Include, or Exclude.
- **Decimal** Defines whether the period character (hex 2E) is included in the ASCII output report between the units and tenths digits. This option is available only in Summagraphics formats. Choices are: Include, or Exclude.
- **Return** Defines whether the Carriage Return (CR) character (hex 0D) is included in the ASCII output report as a terminator. This option is available in GTCO and Summagraphics formats. Choices are: Include, or Exclude.
- **Line Feed** Defines whether the Line Feed (LF) character (hex 0A) is included in the ASCII output report as a terminator. This option is available in GTCO, CalComp and Summagraphics formats. Choices are: Include, or Exclude.

Mode Options

- **Mode** Defines how output reports are sent from the digitizer. Choices are: Point, Line, Continuous, Line Incremental, or Continuous Incremental.
- **Rate** Determines how fast output reports will be transmitted from the digitizer. Choices are: 12, 50, or 100 reports per second.
- **Resolution** The smallest reported value returned by the digitizer. Choices are: 1000 lpi, 2000 lpi, 4000 lpi, 40 lpmm, 100 lpmm, or 150 lpmm.

See the *Advanced Programming Information* section in the AccuTab VI Online Help at www.gtcocalcomp.com for more details.

Using the Tablet Configuration Utilities

If your application is not represented in the AccuSet Menu and does not have an AccuSet Code, or if a different configuration is required, you can use the Tablet Configuration Utilities to configure the AccuTab VI. The Tablet Configuration Utilities replace the 24 switches that were associated with older GTCO digitizers and the Custom Configuration Menu card used with the AccuTab.

To configure the AccuTab VI using the Tablet Configuration Utilities:

- 1 Make sure the AccuTab VI is plugged into a Serial Port, powered On, and all the tablet drivers have been uninstalled or disabled.
- 2 Install the Tablet Configuration Utilities from the *Select Utility Software to Install* section on the TabletWorks CD, or download them from www.gtccalcomp.com.
- 3 After the installation has completed, run the *Tablet Configuration Utilities* from the **Programs** list under *GTCO CalComp TCU*.
- 4 The Tablet Configuration Utilities will begin searching the Serial Ports for a supported tablet.
 - a) If the tablet is found, information about the tablet will display under **Device Info** near the bottom of the screen.
 - b) If the tablet is not found, a message will appear under **Device Info** near the bottom of the screen.
 - i) If Wintab files were found, it is possible that the TabletWorks driver has the Serial Port open.
 - ii) If the Serial Port is open by another application, it will not be displayed under **System Info**. Close any application, or uninstall any driver that is using the Serial Port and select *Refresh System Info* from the **File** drop-down list at the top of the screen. Click on the Serial Port icon under **System Info** to search that Serial Port.



The Tablet Configuration Utilities can use the TabletWorks driver to test the tablet, but it must be communicating directly with the tablet, via the Serial Port, in order to configure it.

- 5 Once the AccuTab VI has been found on a Serial Port, select *Advanced Configuration* from the **Options** drop-down list at the top of the screen.
 - a) If Advanced Configuration is not an option, make sure *Wintab Compatible Driver* is not listed under **Device Info**.

- 6 Select a predefined, **0 1** through **5 5**, AccuSet Code, or select one of the User Defined, **9 0** through **9 8**, AccuSet Codes to customize.
 - a) User Defined (**9 0** through **9 8**) AccuSet Codes are initially read from the tablet when the Advanced Configuration screen opens. This is to prevent loss of custom settings. Selecting **Read Current Settings** from the Options menu will:
 - i) Read the Power-Up settings and User Defined AccuSet Codes from the tablet.
 - ii) Overwrite all Custom Settings not yet saved to the tablet.
 - b) **Restore Factory Settings** from the Options menu will prompt for:
 - i) Power-Up settings reset to factory default and set current.
 - ii) User Defined AccuSet Codes cleared and reset to factory default.
- 7 After making your selections, choose one of the following from the **File** menu at the top of the screen.
 - a) **Save Temporary Settings** will configure the tablet as shown until the tablet is powered off, reset, or another AccuSet Code is selected.
 - i) After saving temporary settings, select **File/Exit** to test with other applications. This will leave the tablet configured to the temporary settings selected and close the Serial Port, enabling other applications to communicate with the tablet.
 - b) **Save Power-Up Settings** will configure the tablet as shown. Every time the tablet is powered off and back on, or reset, it will restore these settings.
 - c) **Save Custom Settings** will reconfigure all nine of the tablet's User Defined AccuSet Codes to the settings specified in the corresponding AccuSet Code drop-down list.
 - i) You can click on the AccuSet Menu buttons on the tablet using the tablet's cursor to activate these configurations:
S plus **9 0** through **9 8**.
- 8 When you have finished, select *Exit* or *Close* from the **File** menu.
 - a) *Exit* will close the Tablet Configuration Utilities.
 - b) *Close* will exit the Advanced Configuration Screen and return to the **Tablet Configuration Utilities** window.

Learning the Basics

You will find that using your **AccuTab VI** tablet is as easy, or easier, than using a mouse. The AccuTab VI cursor is more accurate than a mouse, giving you greater control over your movements.

Using the Cursor

The cursor does not need to be in contact with the tablet surface in order for the digitizer to sense its presence. It can be detected up to 1/2" above the Active Area. When the cursor is in the zone above the surface of the digitizer, it is referred to as being *in prox*. The Indicator light will go from a blinking green light to a solid green light when the cursor is in prox of, or touching, the digitizer's surface. The *in prox zone* allows you to trace through materials placed on the digitizer's surface, such as a drawing or a book.

When you use the cursor, the intersection point of the crosshairs on the lens identifies the point you are selecting. The crosshairs are etched on the bottom of the lens to increase accuracy. For maximum precision, look through the lens from a position directly over it.

Button 0 on the cursor is used as the *pick*, or left mouse, button. All other buttons are defined by the TabletWorks software, or through your own software application.

To illuminate the lens area of the high-accuracy cursor, press and hold any button in the far right column (3, 7, B, or F); at the same time, press and hold any button in the far left column (0, 4, 8, or C). The right column button must be held down while pressing the left column button. This same procedure turns the illumination Off. The illumination defaults to Off when the tablet is first powered on.

Because you will always need one right column button and one left column button free to control the cursor illumination, you should reserve one button in each column from any macro recording.

Learning Basic Movements

The AccuTab VI cursor provides all the basic movements of a mouse, including clicking, double-clicking and dragging.

Clicking and Double-Clicking

Clicking is the action of making a selection. You may be selecting an AccuSet Code from the AccuSet Menu on the digitizer surface, or making a selection from your computer monitor screen. To click, place the cursor on, or move the screen pointer using the cursor to, the item to be selected. Press Button 0 on the cursor. A *double-click* requires you to press the button two times, while the tool remains in the same place. You can also double-click by pressing the cursor button that has been defined as a *double-click* button (see TabletWorks Help).

Dragging

Dragging is the action of moving the cursor during a selection. To drag, click on an object, but instead of releasing the cursor button, hold it down while moving the cursor, or corresponding object on the screen, to the desired new location.

Caring for the Tablet and Transducer

Follow these precautions at all times to avoid damaging your AccuTab VI:

- ❑ Avoid discharging static electricity to the tablet.
- ❑ Do not place heavy objects on the tablet surface.
- ❑ Do not use sharp objects, such as compasses or knives, on the tablet surface.
- ❑ Do not use the tablet surface for any purpose other than drawing, tracing, or digitizing.
- ❑ Do not drill holes on any part of the digitizer or controller.

Cleaning the Tablet

To clean the tablet's surface, use a soft, nonabrasive cloth. Hardened dirt can be removed with a slightly dampened cloth. Do not clean pencil lines with a soft cleanser or pencil eraser. This could create an undesirable shiny spot on the tablet's surface that cannot be removed.



Do not use abrasive cleaners, acrylic, or lacquer paint thinners – or cleansers with an acetone or solvent base, such as MDC or EDC – on the tablet surface. They will damage the tablet case.

Cleaning the Cursor

To clean the cursor body, use a mild cleanser. Do not spray the cleanser directly on the cursor—instead, dampen a soft cloth with a mixture of water and the cleanser. Clean the cursor reticles with alcohol.



Excessive cleaning can dissolve the filled black crosshair on a reticle.

Troubleshooting Guide

As with any computer peripheral, AccuTab VI problems sometimes do occur. Most of these problems are easy to find and correct. This troubleshooting guide provides clear instructions for finding and solving all common digitizer problems. In most cases, you will be able to quickly take care of the problem yourself by following these steps:

1 Install properly first.

This troubleshooting guide assumes you have already correctly installed your AccuTab VI according to the detailed instructions in the *Installing your AccuTab VI* section. If you have not followed the step-by-step instructions in that section, do so now.

2 Read the topics below to check for a solution to your problem. Work through the troubleshooting flowcharts on the following pages in this troubleshooting guide. The GTCOTEST application referenced there can be found in AccuTab VI Online Help.

Record any unusual observations. Your notes will be useful if you need assistance from GTCO CalComp later.

3 If your system still doesn't work...

Call our Technical Support Department at 410.312.9221, or +49 (0) 89 370012-0 (Europe). Be prepared to discuss the observations you made while troubleshooting. A Technical Support Specialist will help you resolve the problem as quickly as possible.

A purple speech bubble icon with a red arrow pointing to the right, containing the word "Note" in purple.**Note**

Refer to the AccuTab VI Tones table on page 19, while using this *Troubleshooting Guide*.

Tablet Checklist

- Is the tablet power supply plugged into the digitizer and into a live outlet?
- Is the tablet power switch On?
- Does the Indicator light glow steadily when the transducer is in prox inside the Active Area? Does the Indicator LED go out when the transducer is outside the Active Area?
- The Indicator light will be off if the transducer has gone into Sleep Mode. Press any button on the transducer to activate it. If the transducer is in the Active Area and the Indicator light remains off, change the transducer's battery.
- Are all cable connections seated properly?
- Is the communications cable (either USB or serial) connected to both the digitizer and the computer? Check that the cable is connected to the serial port specified in your software package.
- Is the transducer cable connected to the digitizer?
- Is the tablet set up according to the software recommendations?
- Are any of the connector cables or receptacles damaged? Check for bent pins, cut insulation, and loose wires.

Computer Checklist

- Is the computer plugged into a live outlet? Did you turn on the computer?
- Does the computer work with any of your software? Try one of your other programs. If the computer has a diagnostic diskette, use it.
- Is your software package installed correctly?
- If your communications connection is USB, does the USB port work? If serial, does the serial port work? The only way to test the port without special equipment is to reinstall something that has worked in the past and see if it still works.
- Have there been any recent electrical storms in your area that may have damaged your equipment?

Software Checklist

Does the tablet work with some software?

If your tablet currently works with some software packages, you know that the tablet, USB or serial port, and computer work.

- Even if the software package you are trying to install and the software that is working both support the same tablets, it does not always mean that you can use the same tablet settings. The output format may be the same, but the communications protocol, resolution, operating mode, and data rate may be different. Check your software's requirements.

- Call the software manufacturer. Perhaps the software package has a problem with another component of your system.

Did the software work in the past?

If the software package worked with the tablet in the past, then the problem lies with the new setup.

- Check all the connectors. Is the tablet still plugged into the same port? If yes, reset the tablet by unplugging and replugging the power supply and restart the software.
- Did you reset or power down the computer?
- During reset and power-on, the computer can send meaningless characters out the serial port and this can disable the tablet. Reset the tablet again.
- Have you installed any new software or hardware? Remove it from your system and see if the problem goes away.
- Did you move any cables?
- If you are using a PC, did the new software alter your AUTOEXEC.BAT file?
- Have you updated the software or its drivers?
- Are you loading another mouse driver?
- Did you reinstall the software, perhaps after a problem with your hard drive? Double check your installation procedure and the driver you selected.
- Reinstall the software from its master diskettes. The program files may have been corrupted.

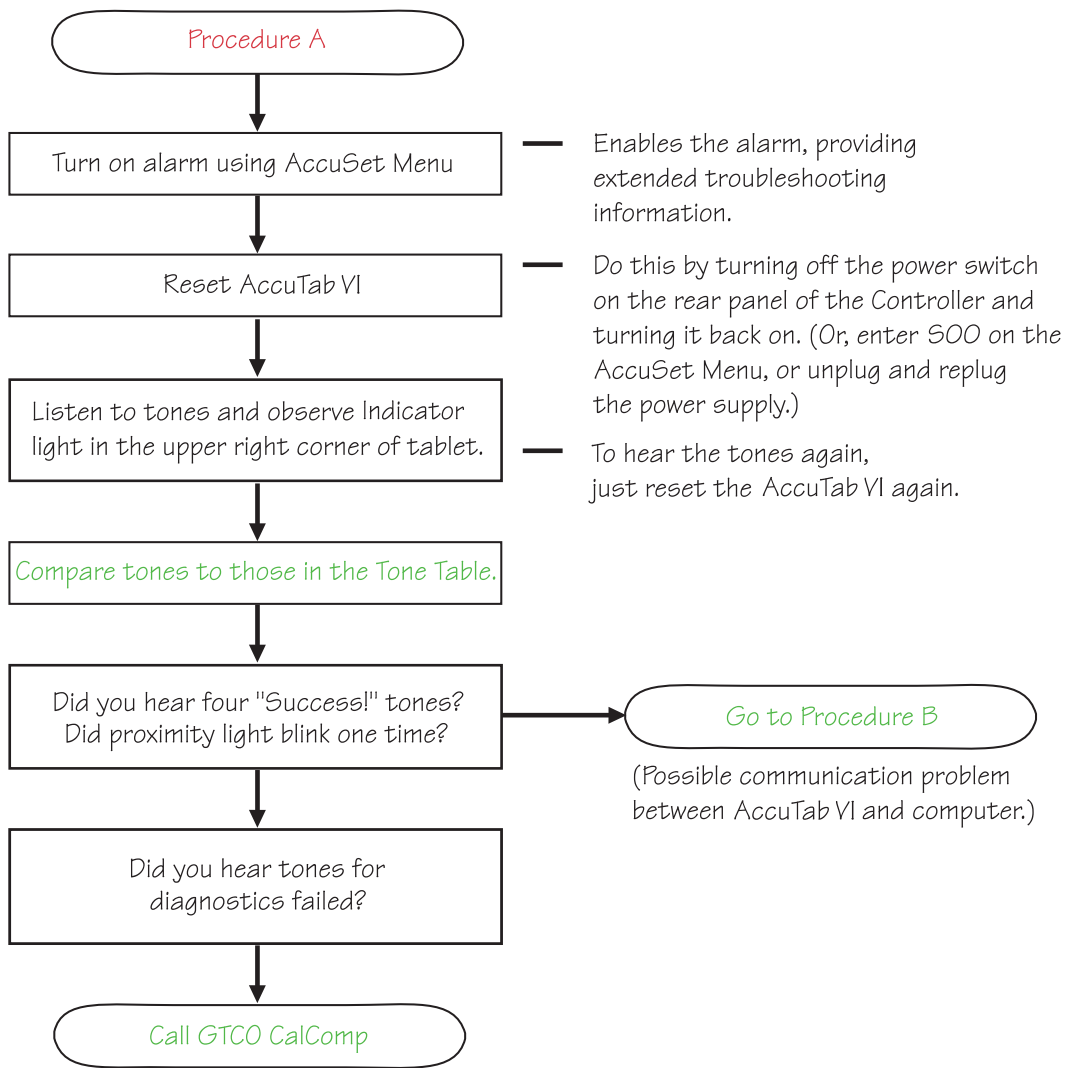
Troubleshooting Chart

The following table lists common AccuTab VI problems, their causes and their solutions.

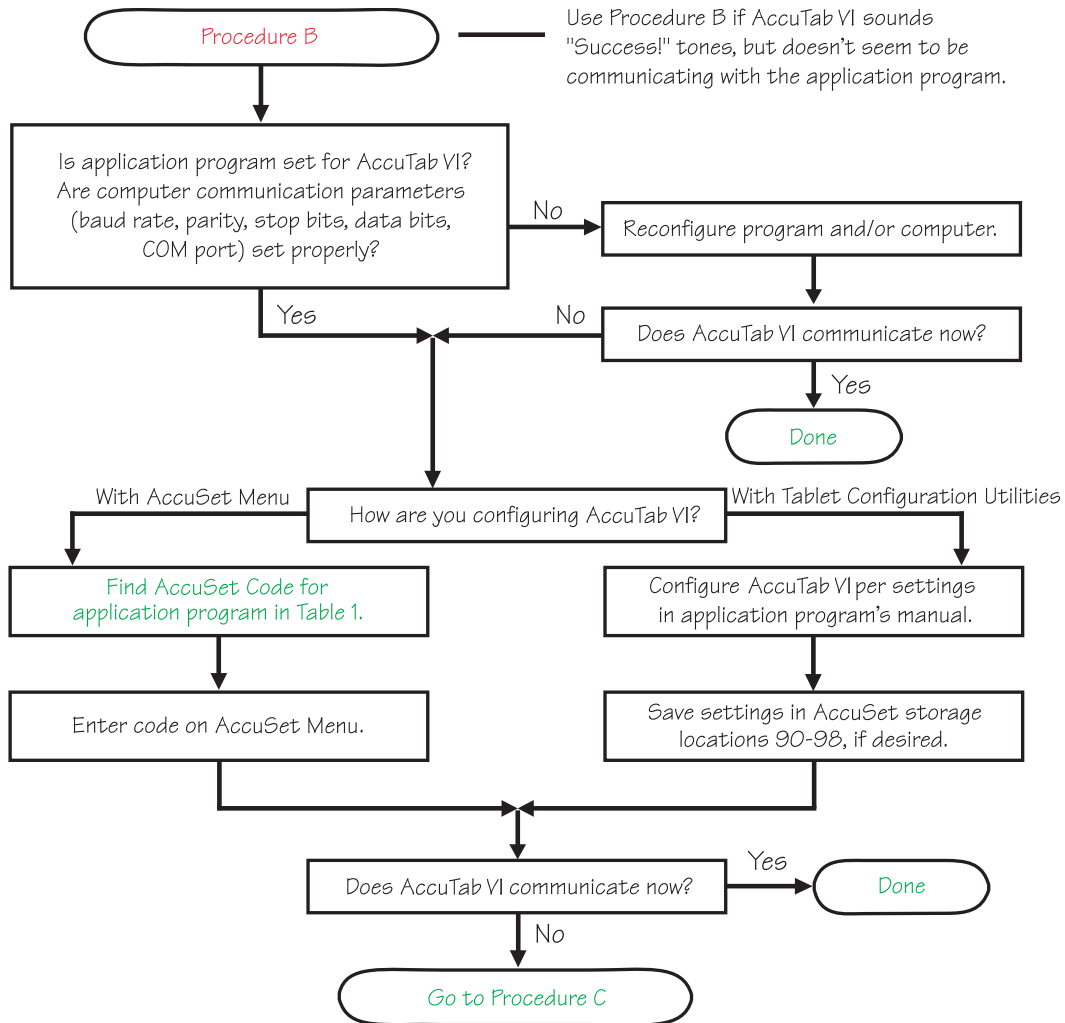
Problem	Cause	Solution
Frozen screen pointer	Cordless transducer is in Sleep Mode.	Press any button on the cursor.
	Tablet is plugged into the wrong serial port on the computer.	Check that the serial port being used is correctly identified in your software application.
	Tablet is not powered correctly.	Check that the power cable is installed correctly.
	Software application set up incorrectly.	Check that the tablet is identified in your software application.
	Another device is connected to a COM port that shares the same IRQ as the tablet COM port (<i>i.e.</i> , your tablet is connected to COM1 IRQ4 and your modem is connected to COM3 IRQ4).	Move one of the devices to another COM port. Contact your system manufacturer for assistance in relocating the device.
Screen pointer appears to shake or jitter	Tablet is set too close to the screen monitor.	Move the tablet farther away from the screen.
	Tablet's frequency setting may conflict with the display.	Alternate the transducer's frequency, if it supports changing the frequency. (See the <i>Reducing Monitor Interference</i> section in <i>Appendix</i> .)
Unable to use the entire tablet surface	Incorrect format selected.	Check your selections using the Tablet Configuration Utilities.
	Software application set up incorrectly.	Check that the tablet is identified in your software application.

Procedure A: Begin Troubleshooting

Note This procedure should only be used to troubleshoot serial connections.



Procedure B: Troubleshooting



This page left blank intentionally.

Returning your Tablet for Repair

If you think you have a defective tablet, first see all topics in this section (above) and visit our Web site at

www.gtcocalcomp.com/supportgtcocalcompcontact.htm
for the latest support information.

If you are still unable to properly operate your digitizer system, call Technical Support at 410.312.9221, or +49 (0) 89 370012-0 (Europe), or email us at

gtcocalcomp.support@gtcocalcomp.com.

Technical Support will assist you in determining if your tablet is defective, and will help you obtain a Return Merchandise Authorization (RMA) number.



Please do not return your product without first discussing the problem with, and receiving an RMA from, a GTCO CalComp Technical Support Specialist.

Repackaging for Shipment

Whenever you ship electronic equipment, try to ship it in its original packing materials. Because packing materials are static-charged, you should ship the cursor or any extra electronics boards inside approved antistatic plastic bags. If you are shipping the tablet or accessories to a GTCO CalComp Service Center for repair, attach a tag to the equipment with the following information:

- Model number
- Serial number
- Maintenance contract number (if applicable)
- Return Merchandise Authorization number
- Detailed description of the problem

Appendix: Optional Transducers

The AccuTab VI ships with the high-accuracy cursor. Nevertheless, other corded and cordless transducers, pens and cursors, can be used with the AccuTab VI, although none of these are capable of the precision and accuracy of the high-accuracy cursor. This Appendix provides information about using a corded or cordless transducer with the AccuTab VI, their care and maintenance, and troubleshooting issues.

The Transducers

In addition to the high-accuracy cursor, two types of transducers can be used with the AccuTab VI: **pens** and **cursors**. Both are available in corded and cordless versions. The corded transducers get their power from the digitizer. Cordless transducers are powered by batteries. They will go into a battery-saving *Sleep Mode* when no button has been pressed for from one to five minutes, depending on the type of transducer you are using. To reactivate a sleeping transducer, press one of its buttons.

Cursors

The optional cursors are similar in appearance to a mouse, except that they have an attached lens with crosshairs for highly accurate detail work. Cursors are available in 4- or 16-button models.

Button 0 on the cursor is used as the *pick*, or left mouse, button. All other buttons are defined by the TabletWorks software, or through your own software application.

Pens

Each pen is similar in appearance to a ballpoint pen. The pen transducer has three buttons, two on the side of the barrel and one in the pen tip. Three different types of pens are identified by a colored ring on the pen barrel—the *Click Tip* has a light blue ring; the *Pressure Tip*, a black ring; and the *Lite Touch Tip*, a red ring. The variations among these pens are tilt- and height-sensitivity. On all three pens, the pen tip is Button 0 and is used as the *pick*, or left mouse, button. The lower side button is Button 1 and the upper side button is Button 2.

The functions these buttons provide are defined through the TabletWorks software, or through your own software application.

Click Tip Pen

The click tip pen is available in both corded and cordless versions. It is primarily used for tracing and menu picking. To use the click pen, press down until you feel the tip *click*.

Lite Touch Pen

The lite touch pen is only available in the cordless version. It is similar to the click tip pen, except that it calls for, as the name implies, a lighter touch, without the click.

Pressure Pen

The pressure pen is only available in the cordless version. With the pressure pen, the pen tip can be used both as a mouse button and a pressure-sensitive button. To take advantage of the pressure feature, the software package you use must recognize pressure sensitivity. The software assigns values to the pressure levels and uses this data to vary such parameters as line width and color.

To use the pressure pen, press down on the tip and release for a mouse pick action. Press down and hold for the pressure action. Pressure increases as you continue pressing down on the tip. To decrease the pressure, ease up on the tip.

Basic Movements

The AccuTab VI transducers provide all the basic movements of a mouse, including clicking, double-clicking and dragging.

Clicking and Double-Clicking

Clicking is the action of making a selection. You may be selecting a key on the digitizer surface, or making a selection from your computer monitor screen. To click, place the transducer on, or move the screen pointer using the transducer to, the item to be selected. Tap the pen, or press Button 0 on the cursor. A *double-click* requires you to quickly tap the pen, or press the button, two times, while the tool remains in the same place. You can also double-click by pressing the pen or cursor button that has been defined as a *double-click* button (see TabletWorks Help).

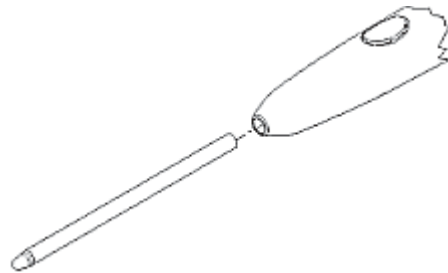
Dragging

Dragging is the action of moving the transducer during a selection. To drag, click on an object, but instead of lifting the pen tip or releasing the cursor button, hold it down while moving the transducer, or corresponding object on the screen, to the desired new location.

Care and Maintenance

Replacing the Pen Tip

To replace the pen tip, grasp the tip and pull straight out (see figure). Insert the new tip and press until it *clicks* into place.



Replacing the Cordless Pen Batteries

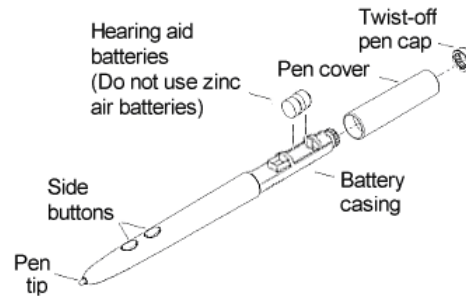
The cordless pens require two 393 silver oxide batteries. The average battery life is 200 hours.



Do not use ZINC AIR batteries as replacement batteries. They will corrode the electronics of the pen.

To replace the batteries:

- 1 Unscrew the pen cap. Hold the pen from the bottom and gently slide off the pen cover to expose the batteries.
- 2 Remove the old batteries by turning the pen over and gently tapping it, letting the batteries fall into your other hand.
- 3 Insert the new batteries as they are shown in the figure above (+ towards pen tip).
- 4 Replace the pen cover and screw the pen cap onto the pen.

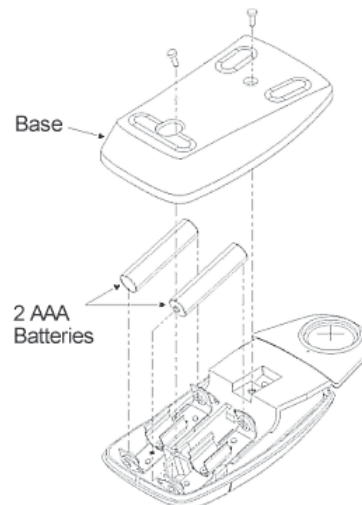


Replacing the Cordless Cursor Batteries

The cordless cursor requires two AAA batteries. The average battery life for the cursor batteries is 2,000 hours.

To replace the batteries:

- 1 Place the cursor face down in the palm of your hand. Use a Phillips screwdriver to remove the two screws located on the bottom of the cursor (see figure). Remove the cursor base.
- 2 Remove the old batteries from the battery casings.
- 3 Place the new batteries in the casings, matching the polarity of each battery with the markings on the connector strips (match + to +).
- 4 Reposition the cursor base. Replace the screws with the Phillips screwdriver.



Note

When you replace the cordless pen or cursor batteries, the transducer will reset to the default frequency. If you changed the frequency of the transducer before replacing the batteries, you will need to do so again after replacing the batteries (see the *Reducing Monitor Interference* section next).

Reducing Monitor Interference

If you are experiencing monitor interference with your tablet, you can reduce the interference by changing the frequency your transducer uses. This can be done only for transducers that support changing the frequency.

Transducers with the following FCC ID numbers support two frequencies: ECPPPP, ECPPP2, ECPPLTP, ECPPCURSOR4, ECPPCURSOR16, and ESPPCURSORII. Transducers with FCC ID numbers other than those listed must have their frequency changed by GTCO CalComp.

Changing the Frequency of the Cordless Cursor

- 1 Place the cursor on the tablet surface.
- 2 Press Buttons 1 and 2 simultaneously and hold for approximately three seconds.
- 3 The cursor turns itself off. You will know the cursor is off when the Indicator light on the tablet begins blinking.
- 4 The cursor turns on again at the new frequency. You will know the cursor is on when the Indicator light glows steadily.

To return to the default frequency, repeat the above process. When you replace the cursor batteries, the cursor is automatically reset to the default frequency.

Changing the Frequency of the Cordless Pen

Press both side buttons and the tip simultaneously and hold for approximately three seconds.

To return to the default frequency, repeat the above process. When you replace the pen batteries, the pen resets to the default frequency.

Regulatory Statements and Warranty

Radio and Television Interference

The user is cautioned that any changes or modifications not expressly approved by the party responsible for compliance could void the user's authority to operate the equipment.

This equipment has been tested and found to comply with the limits of a Class B digital device, pursuant to Part 15 of the FCC rules. These limits are designed to provide reasonable protection against harmful interference in a residential installation. This equipment generates, uses and can radiate radio frequency energy and, if not installed and used in accordance with the instructions, may cause harmful interference to radio communications. However, there is no guarantee the interference will not occur in a particular installation. If this equipment does cause harmful interference to radio or television reception, which can be determined by turning the equipment off and on, the user is encouraged to try to correct the interference by one or more of the following measures:

- ❑ Reorient or relocate the receiving antenna
- ❑ Increase the separation between the equipment and the receiver
- ❑ Connect the equipment into an outlet on a circuit different from that to which the receiver is connected.
- ❑ Reorient or coil cables.
- ❑ Consult the dealer or an experienced Radio/TV technician for help.



Any cables the user adds to the device must be shielded to be in compliance with the FCC standards. Any unauthorized modification to this device could result in the revocation of the end user's authority to operate this device.

Canada

This digital apparatus does not exceed the Class B limits for radio noise emissions from digital apparatus as set out in the radio interference regulations of the Canadian Department of Communications.

Le présent appareil numérique n'émet pas bruits radioélectriques dépassant les limites applicables aux appareils numériques de Classe B prescrites dans le règlement sur le brouillage radioélectrique édicté par le Ministère des Communications du Canada.

Declaration of Conformity

The "CE" mark on this device indicates compliance under the EMC 89/336/EEC Directive.

Declaration of conformity according to ISO/IEC Guide 22 and EN 45014

Manufacturer's Name: GTCO CalComp, Inc.

Manufacturer's Address: 7125 Riverwood Drive
Columbia, MD 21046
U.S.A.

declares, that the product

Product Name: AccuTab VI

Model Numbers: AT6-2024, AT6-3036, AT6-2436, AT6-3648,
AT6-4460

Product Options: All

conforms to the following product specifications:

Safety:

EMC: CISPR22:1985/EN 55022:1988–Class B
EN 50082-1:1992
IEC 801-2:1991–4kV CD, 8kV AD, Criterion B
IEC 801-3:1984–3V/m, Criterion A
IEC 801-4:1988–1kV power lines, .5kV data lines,
Criterion B

RoHS: "R" labelled products conform to DIRECTIVE
2002/95/EC. These products are RoHS-compliant.

Supplementary Information

The product herewith complies with the requirements of the Low Voltage Directive 73/23/EEC and the EMC Directive 89/336/EEC.

Scottsdale, Arizona, U.S.A. 09-15-2006 Dana Doubrava
Location Date Engineering Manager

European Contact:

GTCO CalComp GmbH
Kreillerstrasse 24
81673 Munich
Germany
Tel: + 49 (0) 89 370012-0
Fax: + 49 (0) 89 370012-12

Japan



この装置は、情報処理装置等電波障害自主規制協議会（VCCI）の基準に基づくクラスB情報技術装置です。この装置は、家庭環境で使用することを目的としていますが、この装置がラジオやテレビジョン受信機に近接して使用されると、受信障害を引き起こすことがあります。
取扱説明書に従って正しい取り扱いをして下さい。

European Union Emission Directive

This product is in conformity with the protection requirements of EU Council Directive 89/366/ECC on the approximation of the laws of the Member States relating to electromagnetic compatibility.

This product has been tested and found to comply with the limits for Class B Information Technology Equipment according to CISPR 22/European Standard EN55022. The limits for Class B equipment were derived for typical industrial environments to provide reasonable protection against interference with licensed communication devices.

European Union WEEE Directive



The manufacture of this equipment required the extraction and use of natural resources. It may contain hazardous substances that could impact health and the environment.

- In order to avoid the dissemination of the hazardous substances into the environment and to diminish the pressure on our natural resources, we encourage you to return this product to the appropriate take-back system facility. These facilities reuse or recycle most of the materials in this equipment in a responsible way.
- The crossed-out wheeled bin symbol below invites you to use these take-back systems.
- If you need more information about the collection, reuse and recycling systems in your area, please contact your local or regional waste authority.
- Further information about the responsible end-of-life management of this and other GTCO CalComp products is available on our Web site at www.gtccalcomp.com.

Bescheinigung des Herstellers/Importeurs

Heirmit wird bescheinigt, dass der/die/das

AccuTab VI

(Geraet, Typ, Bezeichnung)

im Uebereinstimmung mit den Bestimmungen der

Vfg 1046/1984

(Amtsblattverfuegung)

Funk-Entstort ist.

Der Deutschen Bundespost wurde das Inverkehrbringen dieses Geraetes angezeigt und die Berechtigung zur Ueberpruefung der Serie auf Einhaltung der Bestimmungen eingeräumt.

GTCO CalComp, Inc.

(Name des Herstellers/Importeurs)

Dieses Geraet wurde einzeln sowohl als auch in einer Anlage, die einen normalen Anwendungsfall nachbildet, auf die Einhaltung der Funk-entstoerbestimmungen geprueft. Es ist jodoch moeglich, dass die Funk-entstoerbestimmungen unter unguenstigen Umstaenden bei anderen Geraetekombinationen nicht eingehalten werden. Fuer die Einhaltung der Funk-entstoerbestimmungen seiner gesamten Anlage, in der dieses Geraet betrieben wird, ist der Betreiber verantwortlich.

Einhaltung mit betreffenden Bestimmungen kommt darauf an, dass geschirmte Ausfuehrungen gebraucht werden. Fuer die beschaffung richtiger Ausfuehrungen ist der Betreiber verantwortlich.

AccuTab VI Assurance of Performance

GTCO CalComp built this product to meet or exceed its stated performance criteria, and our Limited Warranty guarantees our claims. Proof positive performance makes this warranty one of the best in the entire computer industry. As a user, you are ensured that your AccuTab VI will perform to factory specifications even after thousands of hours of use.

At any time during the warranty period, take advantage of GTCO CalComp's **Performance Verification** standard. GTCO CalComp will retest any tablet during this period to certify that it continues to meet the products stated performance criteria. To have your system retested, simply follow the warranty procedures and contact GTCO CalComp's Technical Support Department. We will measure its performance—including resolution, repeatability and accuracy. If this product should fail any of these tests, GTCO CalComp will repair or replace your digitizer per the terms of our Limited Warranty. In addition, you will receive a report verifying your AccuTab VI's performance to its stated specifications.

Limited Warranty for the AccuTab VI

GTCO CalComp, Inc. warrants these products to be free from defects in material and workmanship under the following terms. Complete and return the enclosed warranty registration card to ensure that your products are covered with this warranty.

Coverage

Parts and labor are warranted for two (2) years from the date of the first consumer purchase for the digitizer tablet, controller, transducers, and tablet accessories. Power supply and cables are warranted for one (1) year. This warranty applies to the **original consumer purchaser only**.

Within the European Union, the warranty period is two (2) years, as mandated by the EU. Contact your local dealer or distributor for additional warranty information.

Warranty is only valid if original consumer's purchase or lease date is less than or equal to six months from the original GTCO CalComp sale date. This information will be captured by the system serial number and confirmed by the reseller's purchase order.

A nominal Warranty Handling Fee will be charged after the first year of use and calculated from the date of original consumer purchase. This payment may be made by Visa, MasterCard or American Express. A copy of the sales receipt or invoice will be required for warranty verification.

Conditions

Except as specified below, this warranty covers all defects in material or workmanship in the products. The following are not covered by the warranty:

- 1 Any product on which the serial number has been defaced, modified or removed (if applicable).
- 2 Damage, deterioration or malfunction resulting from:
 - a Accident, misuse, abuse, neglect, fire, water, lightening or other acts of nature, unauthorized modification for any purpose, unauthorized product modification, or failure to follow instructions supplied with the product.
 - b Repair or attempted repair by anyone not authorized by GTCO CalComp.
 - c Any damage in shipment of the product (claims must be presented to the carrier).
 - d Any other cause which does not relate to a manufacturing defect.
- 3 Any product not sold or leased to a consumer within six months of GTCO CALCOMP's original sale date.

GTCO CalComp will pay all labor and material expenses for covered items, but we will not pay for the following:

- 1 Removal or installation charges.
- 2 Costs for initial technical adjustments (set up), including adjustment of user controls.
- 3 Certain shipping charges. (Payment of shipping charges is discussed in the next section of this warranty.)
- 4 Packaging costs. (Customers should keep their boxes.)

Warranty Service Procedures

- 1 To obtain service on your GTCO CalComp product, contact the Technical Support Department to receive a Return Material Authorization Number (RMA#) and shipping instructions by calling:
In United States: (425)223-4311 (PST)
In Europe: +49 (0) 89 370012-0 (CET)
- 2 Ship the product to GTCO CalComp with the RMA# marked clearly on the outside of the box. Without a clearly marked RMA# on the shipping box, GTCO CalComp reserves the right to refuse shipment.
- 3 Although you must pay any shipping charges to ship the product to GTCO CalComp for warranty service, GTCO CalComp will pay the return shipping charges for ground shipment. Other shipping options are available at an additional fee.
- 4 Whenever warranty service is required, the original dated sales invoice (or a copy) must be presented as proof of warranty coverage, and should be included in shipment of the product. Please also include your name, address, telephone number, fax number, email address, and a description of the problem.
- 5 If GTCO CalComp determines that the unit is not defective within the terms of the warranty, the consumer shall pay the cost of all freight charges, as well as any repair charges.

Technical Support

Web-based Technical Support is available free of charge at: www.gtcocalcomp.ca, where current driver releases, as well as comprehensive technical support, troubleshooting, Technical Bulletins and FAQs can be found.

Telephone Technical Support is available free of charge to the original consumer for a period of 90 days from the date of purchase of the product. Please contact our Technical Support Department:

In United States: (425) 223-4311 (PST)

In Europe: +49 (0) 89 370012-0 (CET)

You can also fax your request to:

In United States: (877) FAX-IECI (PST)

In Europe: +49 (0) 89 370012-12 (CET)

Disclaimer of Unstated Warranties

The warranty printed above is the only warranty applicable to this purchase. ALL OTHER WARRANTIES, EXPRESS OR IMPLIED, INCLUDING, BUT NOT LIMITED TO, THE IMPLIED WARRANTIES OF MERCHANTABILITY AND FITNESS FOR A PARTICULAR PURPOSE ARE DISCLAIMED. Assuming the warranty above stated is otherwise applicable, it is expressly understood and agreed that GTCO CalComp's sole liability whether in contract, tort, under any warranty, in negligence or otherwise shall be for the repair or replacement of the defective parts and under no circumstances shall GTCO CalComp be liable for special, indirect or consequential damages. The price stated and paid for the equipment is a consideration in limiting GTCO CalComp's liability.

Notice

Some states and provinces do not allow the exclusion or limitation of incidental or consequential damages, so the above exclusion may not apply to you. This warranty gives you specific legal rights, and you may have other rights, which vary from state to state, or province to province.

To obtain service on your GTCO CalComp product, call our Technical Support Department, in the United States at (425) 223-4311 (PST); fax us at (877) FAX-IECI (PST); in Europe at +49 (0) 89 370012-0, or fax us at +49 (0) 89 370012-12 (CET).

We can also be contacted through our Web site at www.gtcocalcomp.ca (in US); at EUOffice@gtcocalcomp.com (in Germany); at infos@calcomp.fr (in France).

Important! All products returned to GTCO CalComp for service must have prior approval in the form of a Return Merchandise Authorization Number (RMA#), which can be obtained by calling the Technical Support Department.



Corporate Headquarters

7125 Riverwood Drive
Columbia, Maryland 21046
Tel: 425.223.4311
Support: 410.312.9221
Sales: 877.902.2979
Fax: 877.FAX.IECI

European Headquarters

GTCO CalComp GmbH
Kreiller Strasse 24
81673 Munich
Germany
Tel: + 49 (0) 89 370012-0
Fax: + 49 (0) 89 370012-12

www.gtcocalcomp.com

Support: 410.312.9221

AccuTab VI™

Copyright© 2008 GTCO CalComp, Inc.

AccuTab VI is a trademark of GTCO CalComp, Inc.

All other products and company names are the trademarks or registered trademarks of their respective owners.

The information contained in this document is subject to change without notice. GTCO CalComp assumes no responsibility for technical, or editorial errors, or omissions that may appear in this document, or for the use of this material. Nor does GTCO CalComp make any commitment to update the information contained in this document. This document contains proprietary information which is protected by copyright. All rights reserved. No part of this document can be photocopied or reproduced in any form without the prior, written consent of GTCO CalComp, Inc.