





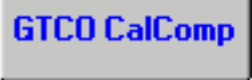


# TabletWorks Control Panel Help Index

When the driver for your tablet type has been installed, the TabletWorks Control Panel is installed on the Windows Control Panel. The TabletWorks Control Panel is divided into several pages, called Tabs. Each Tab provides a number of different settings to configure.

The icons are used here to indicate where the information for each Tab or for the Radio Buttons can be found.

	<b>What is WYPIWYG?</b>	<b>2</b>
	<b>Pressure Pen Adjustments</b>	<b>3</b>
	<b>Pointing Device Button Assignments</b>	<b>4</b>
	<b>Tablet Macros</b>	<b>5</b>
	<b>Pop-up HotKeys</b>	<b>6</b>
	<b>Tablet and Screen Mapping</b>	<b>7</b>
	<b>General Driver Configuration</b>	<b>9</b>
	<b>Special Keystroke Dialog</b>	<b>11</b>
	<b>Contacting GTCO CalComp Peripherals</b>	<b>11</b>

**Note:** Use caution when changing settings. Some settings require the system be restarted before they take effect. The TabletWorks Control Panel will display a message indicating when a restart is necessary.

# What Is WYPIWYG? What is Standard?

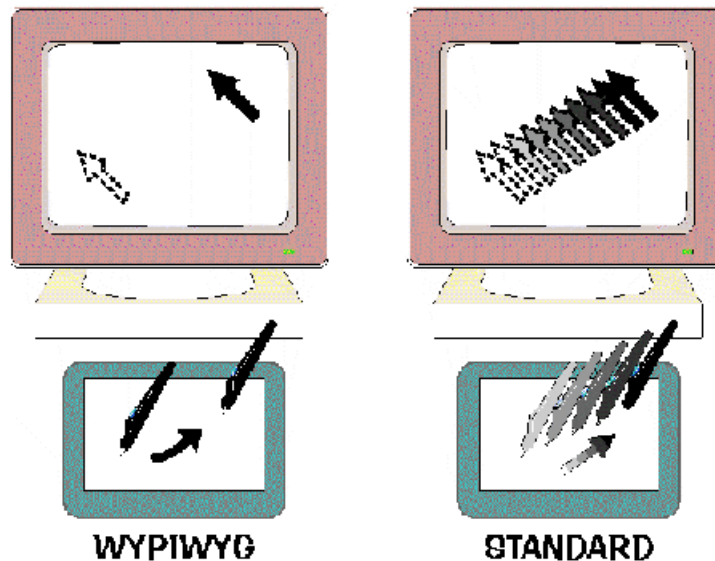
TabletWorks provides two types of tablet movement modes:

- WYPIWYG mode (also called *tablet* or *absolute mode*)
- Standard mode (also called *mouse* or *relative mode*)

**WYPIWYG** is a TabletWorks acronym for “Where You Point Is Where You Go.” It is also known as **absolute** pointing mode. This precision movement mode maintains a direct relationship between the tablet and the screen, minimizing hand movement on the tablet to make you more productive. In this mode, the tablet is “mapped” to the monitor screen. Imagine an image of the display projected onto the tablet. Where you point (using the pen or cursor) determines exactly where the screen pointer appears. Compare this to Mouse mode, where pointer motion is **relative** (not screen-mapped). For example, if you lift the pen and place it in the upper right corner of the tablet, the screen pointer moves to the upper right corner of the screen (see diagram below). Also, if you are accustomed to dragging the pointing device (like a mouse) you can still go to the position you desire but without having to “row” as with a common mechanical mouse. WYPIWYG mode provides maximum precision for drawing, tracing, and working with tablet menus. The default setting maps the full tablet to the full screen, but you can restrict either region through the Mapping controls.

**Standard** movement mode is sometimes called Mouse mode because the movement most closely approximates the movement of a mouse. For example, when a pen is lifted and placed on the tablet, the screen pointer stays in its current location on the screen, and only moves in a certain direction when the pen is on the tablet and is moved in that direction (see diagram below). In addition, the distance that the mouse pointer moves on the screen is not directly related to the distance that the pointing device moves on the tablet.

**Note:** Certain programs, such as graphics applications, throw the tablet into WYPIWYG even though the tablet has been set to Standard.



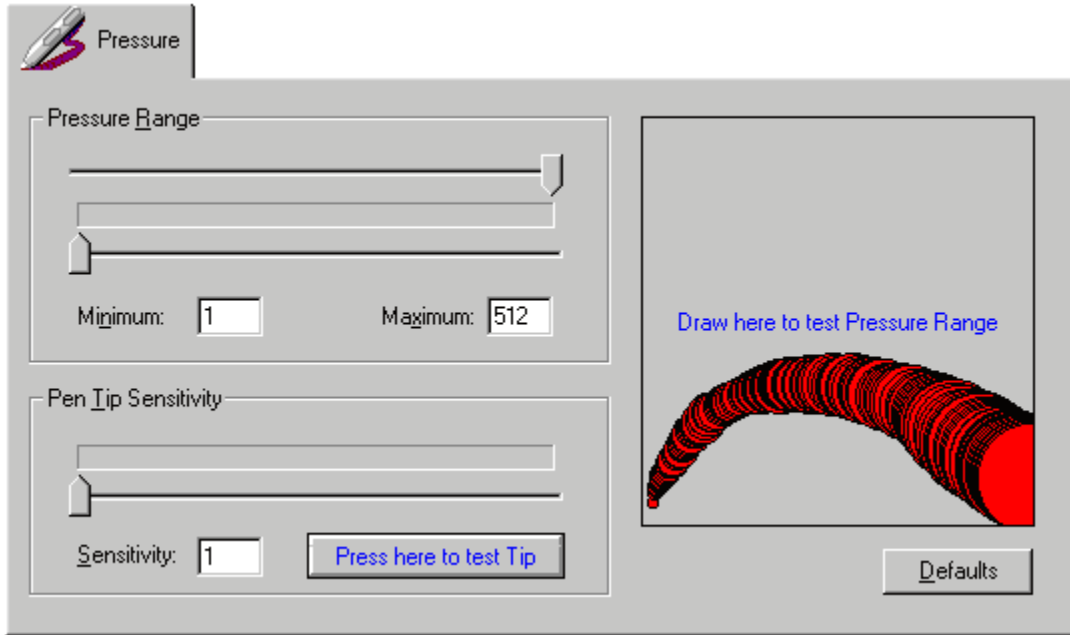
TabletWorks maintains separate Pointing Mode settings (and button assignments) for each pointing tool, as shown on their **Buttons** tabs. You can also use the following shortcuts to toggle the current setting:

- Right-click the TabletWorks tray icon and select **Pointing Mode [Mouse|WYPIWYG]** from the *context menu*, or
- Assign **WYPIWYG Toggle** as a QuickClick! button assignment.

**Tip:** Use the **WYPIWYG** mode for precise control or tracing.  
Use the **Standard** mode for typical mouse-like control.

**Tip:** Assign one of the pen's side buttons to toggle between modes.

# Pressure Settings Adjustment Tab



\*\*\* This feature is available with models that have a pressure-sensitive pen. \*\*\*

This page provides for the pressure pen settings to be adjusted.

Adjust the value sliders for the Minimum and Maximum pressure range setting and for the Pen Tip Sensitivity setting. A painting area and a tip press button are provided for testing the settings.

Selecting the [Defaults](#) button will load the default values for the settings on this page.

## Once the settings have been changed:

- Press the [Apply](#) button to apply the changes and remain in the TabletWorks Control Panel.
- Press the [OK](#) button to apply the changes and exit the TabletWorks Control Panel.
- Press the [Cancel](#) button to exit the TabletWorks Control Panel and discard the changes.

Selecting the [Help](#) button will load the help file.

# Pointing Device Button Assignments Tab



\*\*\* Some options are only available with certain tablets and pointing devices. \*\*\*

This page provides for configuring button assignments for the following pointing devices:

- Pen
- 4 Button Cursor
- 5 Button Cursor
- 16 Button Cursor

A text description for each type of button assignment is listed to the left of the picture of the pointing device.

## To change a button assignment:

1. Select the button you wish to change on the picture of the pointing device.
2. Select a new assignment from the list of available button assignments.

**Caution:** The Left Button assignment must remain on the tip of the pen. Accordingly, this button assignment is disabled. Changing this assignment may adversely affect the drawing or mouse functionality of the pen tip.

## To select a specific button assignment set:

The tablet drivers normally switch button assignments automatically when a different pointing device is detected. If a problem occurs with this detection, or if a specific button assignment set is desired regardless of the pointing device in use, follow these steps:

1. Change the Pointing Device Detection option from Auto-Detect to a specific pointing device.
2. Select the desired button assignments.

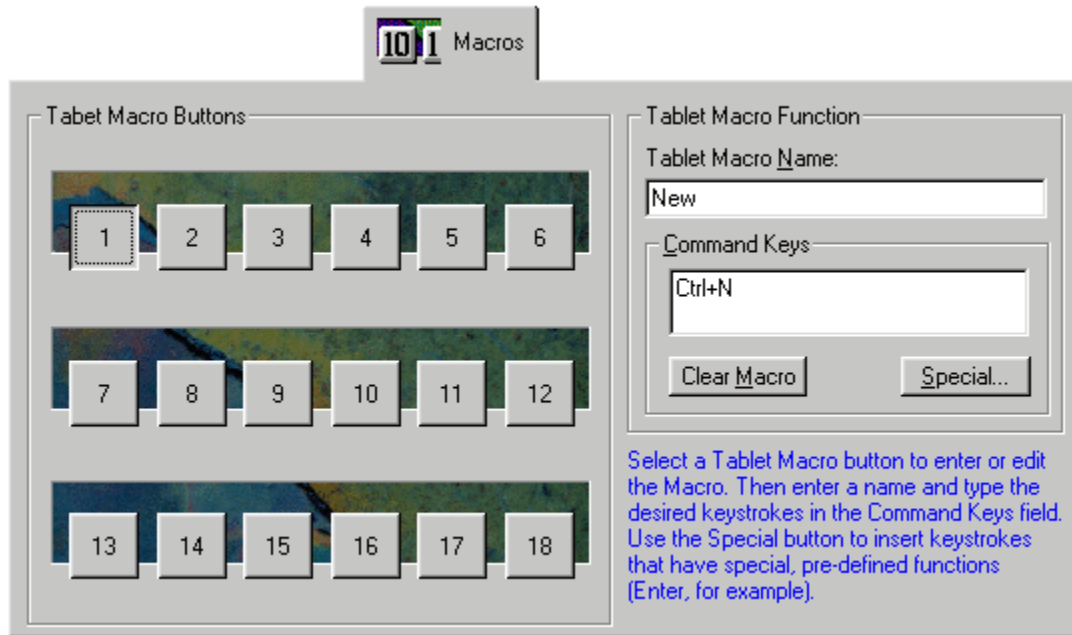
Selecting the [Defaults](#) button will load the default button assignments for each pointing device and return the Pointing Device Detection option to Auto-Detect.

## Once the settings have been changed:

- Press the [Apply](#) button to apply the changes and remain in the TabletWorks Control Panel.
- Press the [OK](#) button to apply the changes and exit the TabletWorks Control Panel.
- Press the [Cancel](#) button to exit the TabletWorks Control Panel and discard the changes.

Selecting the [Help](#) button will load the help file.

# Tablet Macros Tab



\*\*\* This feature is available with the DrawingBoard series that have the Macros tab on the tablet menu. \*\*\*

The Macros page allows the tablet macro buttons to be configured to execute frequently used actions. A defined macro can be changed, or an empty macro can be filled with keystrokes to execute.

## To Add or Change a tablet macro definition:

1. Select the macro button to be defined or changed.
2. Type the name of the macro in the Tablet Macro Name text box. The name will appear in the Defined Macro Functions list.
3. Type the keystrokes for the macro in the Command Key box. For example, for Save, type Ctrl then S. Some keys cannot be entered directly, because they have special meaning to the operating system, so a **Special** button is provided which allows these keystroke combinations to be added to the macro.

## To Remove a tablet macro:

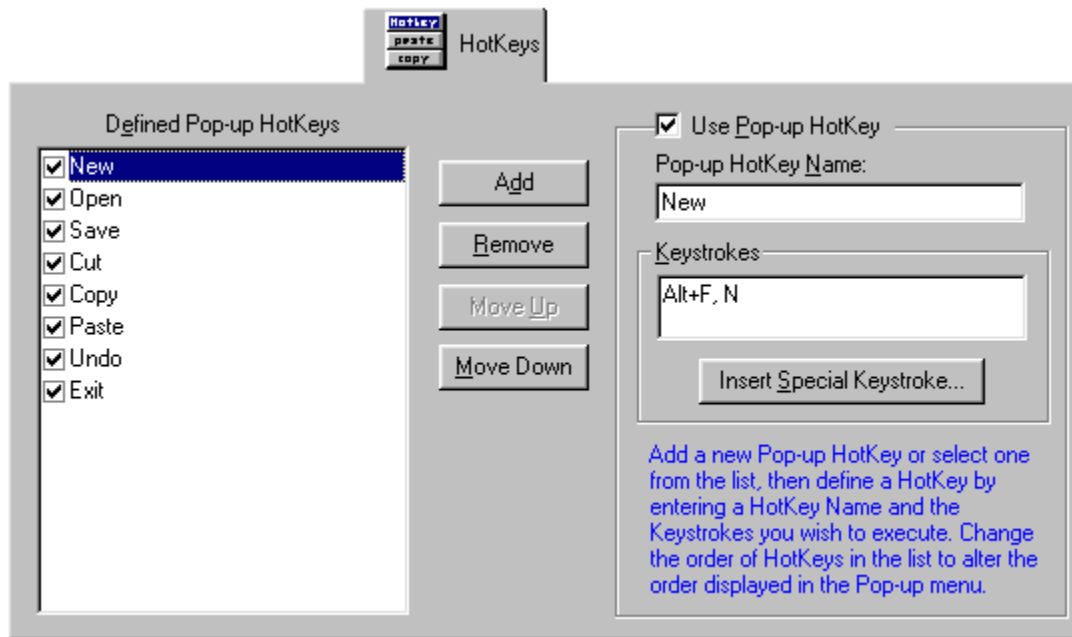
1. Select the macro button to be removed.
2. Select the **Clear Macro** button. The tablet macro's name and keystrokes will be deleted.

## Once the settings have been changed:

- Press the **Apply** button to apply the changes and remain in the TabletWorks Control Panel.
- Press the **OK** button to apply the changes and exit the TabletWorks Control Panel.
- Press the **Cancel** button to exit the TabletWorks Control Panel and discard the changes.

Selecting the **Help** button will load the help file.

# Pop-up HotKeys Tab



\*\*\* This feature is available with most tablet models. \*\*\*

This page allows the Pop-up HotKey menu to be configured.

## To Add a HotKey to the list of Defined Pop-up HotKeys:

1. Click on the [Add](#) button. A checkbox appears in the Defined Pop-up HotKeys list.
2. Type the name of the HotKey in the Pop-up HotKey Name text box. The name appears in the Defined Pop-up HotKeys list. This name will also appear on the Pop-up menu.
3. Type the keystrokes for the Pop-up HotKey in the Keystrokes box. For example, for Save, type Ctrl then S. Some keys cannot be entered directly, because they have special meaning to the operating system, so an [Insert Special Keystroke](#) is provided which allows these keystroke combinations to be added to the function.

## To Remove a HotKey from the list of Defined Pop-up HotKeys:

1. Highlight the HotKey to be removed.
2. Select the [Remove](#) button. The highlighted HotKey will be removed from the list.

## To Change the order of the Defined Pop-up HotKeys:

1. Highlight a HotKey in the Defined Pop-up HotKeys list.
2. Select either the [Move Up](#) or [Move Down](#) button. The selected HotKey will be moved accordingly.

## To Enable or Disable a Defined Pop-up HotKey on the Pop-up menu:

1. Highlight a function in the Defined Pop-up HotKeys list.
2. Check it to enable the HotKey, or uncheck it to disable the HotKey.

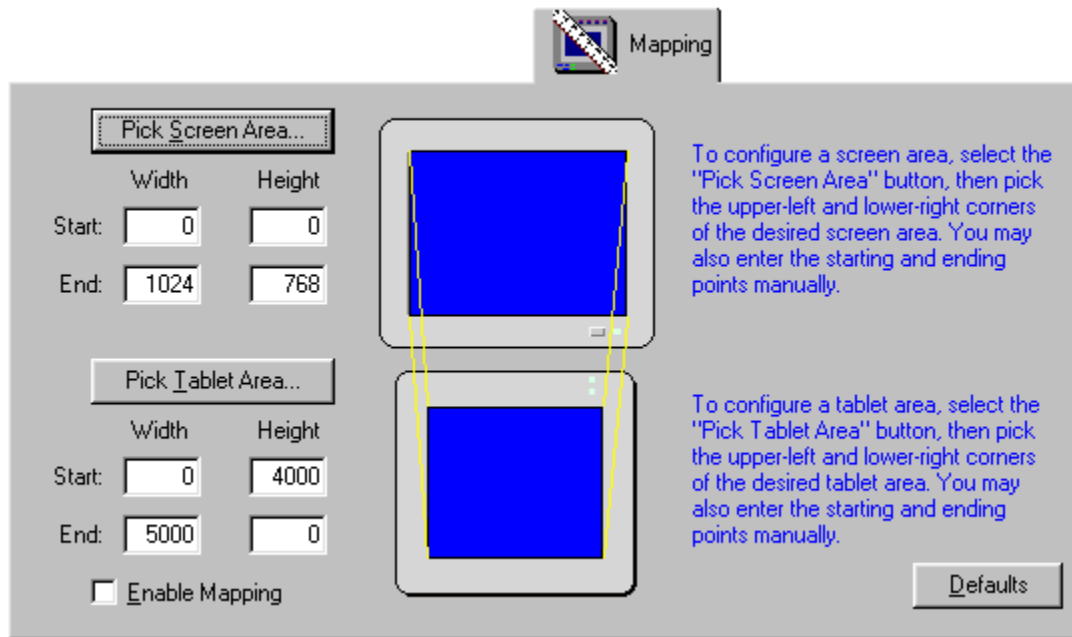
**Note:** This option is also available as the Use Pop-up HotKey option on the right side of the page.

## Once the settings have been changed:

- Press the [Apply](#) button to apply the changes and remain in the TabletWorks Control Panel.
- Press the [OK](#) button to apply the changes and exit the TabletWorks Control Panel.
- Press the [Cancel](#) button to exit the TabletWorks Control Panel and discard the changes.

Selecting the [Help](#) button will load the help file.

# Tablet and Screen Mapping Tab



This page allows the user to configure the size of the screen and tablet areas.

- Select the [Pick Screen Area](#) button to configure the size of the screen area.
- Select the [Pick Tablet Area](#) button to configure the size of the tablet area.

When the TabletWorks Control Panel is selecting a screen or tablet area, the pointer on the screen will change to indicate what is expected next.

The screen and tablet areas' starting and ending coordinates are displayed next to the respective areas. A precise configuration of a screen or tablet area size can be accomplished by editing the coordinate values for the screen and tablet areas.

## To select an area:

1. Pick the upper left and lower right corners of the screen and tablet, respectively.
2. Select the Enable Mapping checkbox.
3. Select the [Apply](#) or [OK](#) button. The defined mapping areas will become effective.

**Suggestion:** Do not select the Enable Mapping checkbox until you are satisfied with the Screen and Tablet areas that you have defined. If the Enable Mapping checkbox is disabled, the defined mapping areas will not be placed into effect. This allows you to change the mapping areas multiple times until you are satisfied with them, and only then place them into effect.

Press the [ESC](#) key on your keyboard at any time to cancel selecting an area.

**Note:** When changing the Screen Area, a warning will be displayed about making the Screen Area too small. This warning refers to users who do not have an additional mouse, and the tablet is the only pointing device in use in Windows.

When the tablet mode is set to **WYPIWYG** mode, which is the default mode when mapping is enabled and the Screen Area size is reduced, any screen locations outside of the selected Screen Area size will not be accessible.

When the tablet mode is set to **Standard** mode, the mapping is ignored and all screen areas will be accessible.

For this reason, it is recommended that a WYPIWYG <-> Standard button assignment be used if the Screen Area size is reduced. This will enable the entire screen to be accessible in Standard mode, and the selected Screen Area will be used in WYPIWYG mode.

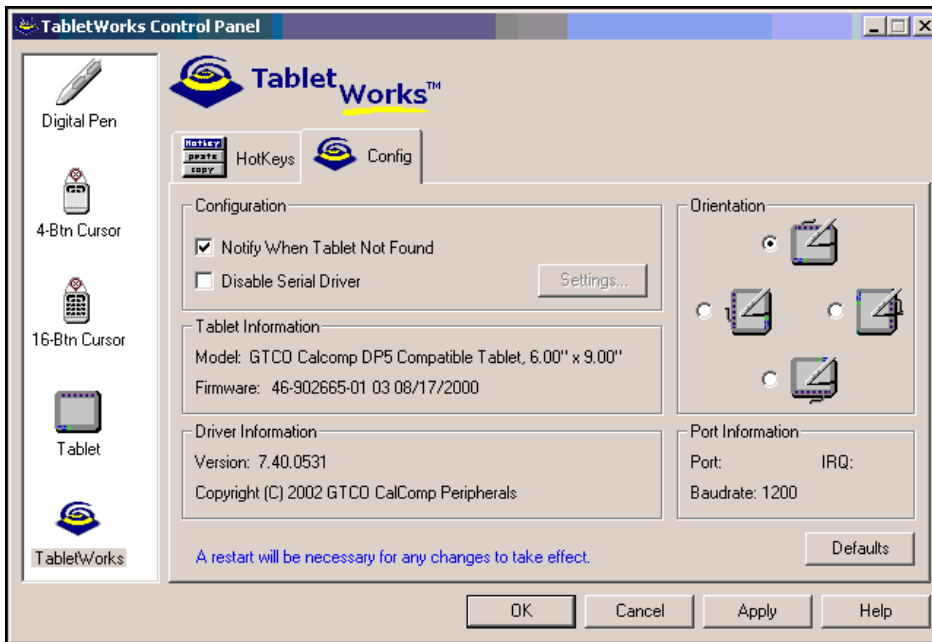
Selecting the **Default** button will load the default settings for this page.

**Once the settings have been changed:**

- Press the **Apply** button to apply the changes and remain in the TabletWorks Control Panel.
- Press the **OK** button to apply the changes and exit the TabletWorks Control Panel.
- Press the **Cancel** button to exit the TabletWorks Control Panel and discard the changes.

Selecting the **Help** button will load the help file.

# General Driver Configuration Tab



This page allows the General Tablet Driver Settings for CalComp tablets to be configured.

The Tab for this page is available when a CalComp tablet model has been connected to the computer and the drivers have been loaded.

## The configurable options include the following:

- Tablet's COM port
- Cursor Type
- Enable/disable Notify When Tablet Not Found
- Size
- Change the tablet orientation

(An option may be grayed out for certain tablet types.)

**Tablet's COM port** - The default COM port selection is set to "Auto-Detect." The COM port selection should only be changed if the driver cannot find a tablet, or if the tablet does not function in Windows.

**Enable/disable Notify When Tablet Not Found** - When the Notify When Tablet Not Found option is enabled, the driver will display an error notification message during the system boot process if a CalComp tablet is not found on the system. This is useful for diagnostic purposes, and to notify the user that there may be a problem with the tablet hardware. If this message is not desired, for example, on a laptop computer the tablet may not always be connected, this option may be disabled. Note that this option is automatically disabled if the COM port selection is not "Auto-Detect". When the COM port is manually selected, the driver will automatically not produce an error message if no tablet is detected.

**Change the tablet orientation** - To alter the orientation of the tablet, select one of the four rotations available in the Orientation section.

---

Selecting the [Default](#) button will load the default settings for this page.

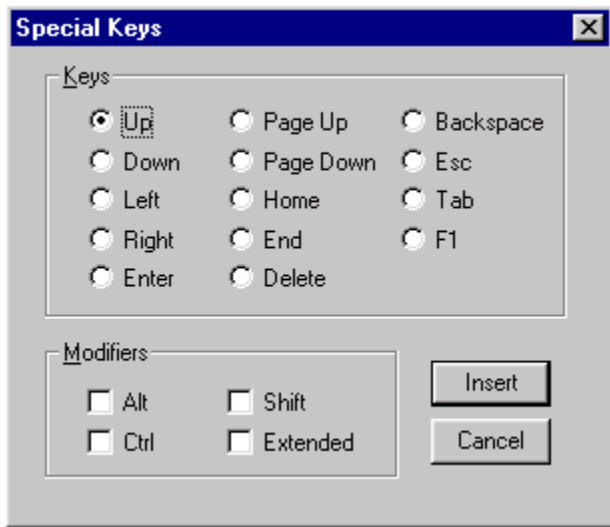
**Once the settings have been changed:**

- Press the [Apply](#) button to apply the changes and remain in the TabletWorks Control Panel.
- Press the [OK](#) button to apply the changes and exit the TabletWorks Control Panel.
- Press the [Cancel](#) button to exit the TabletWorks Control Panel and discard the changes.

The system will need to be restarted for any changes to take effect.

Selecting the [Help](#) button will load the help file.

# Special Keystroke Dialog



This dialog box allows the insertion of keystrokes that have special meaning to the operating system into Macro or HotKey definitions.

Select a special keystroke, with or without a modifier, and pick the [Insert](#) button to insert the keystroke value into the definition of the Macro or HotKey.

Pick the [Cancel](#) button to return without adding a keystroke value to the Macro or HotKey.

## Contacting GTCO CalComp Peripherals

To obtain Technical Support for a CalComp digitizer product, or to obtain the latest driver version for your model of digitizer, contact GTCO CalComp Peripherals at any of the following locations:

Internet [www.gtcocalcomp.ca](http://www.gtcocalcomp.ca)

Technical Support Hotline [\(604\) 925-6150](tel:(604)925-6150)

Technical Support FAX [\(604\) 925-6170](tel:(604)925-6170)