



GEIST

MONITOR | Watchdog

Watchdog 15 / Watchdog 15-P

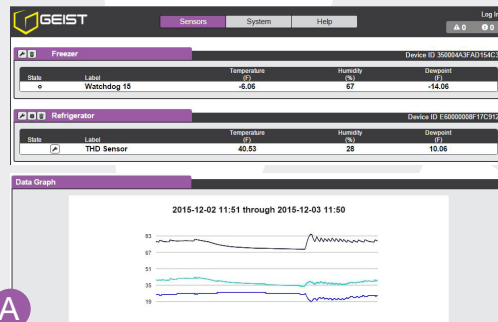
The Watchdog 15 is a self-contained environment monitor with an on-board temperature/humidity sensor. Equipped with two digital sensor ports, the Watchdog 15 can support up to four external sensors using a splitter.



6 VDC
(optional on
Watchdog 15-P)

Features

- Real Time Sensor Data Feeds
- Sensor Data Logging & Graphing
- Data Logs
- SNMP (v1, v2c, v3)
- Email & Email-to-SMS Alerts
- Alarm Escalations
- Alarm Repeat and Delay
- Alarm Valid Hours
- Periodic Email Status Reports
- Office 365 Email Support
- Display in Metric or Imperial
- Multiple Languages
- Access Account Levels
- Encryption via TLS/SSL
- Configuration Back-up
- Interface with IP Surveillance Cameras
- Remote Firmware Updates



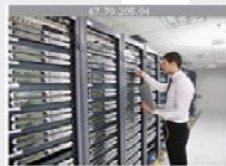
A

State	Label	Trigger	Severity	Type	Value	Valid Time	Notify
On	Watchdog 15	Temperature	Alarm	High	164.00	—	[Off]
Off	Watchdog 15	Temperature	Alarm	Low	-40.00	—	[Off]
Off	Watchdog 15	Temperature	Alarm	Low	-40.00	—	[Off]

C

D

E




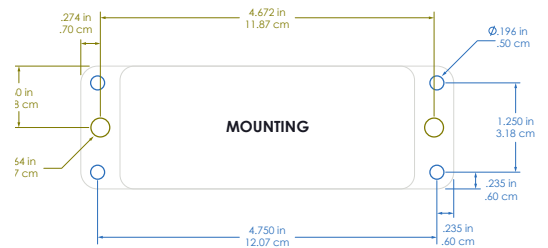
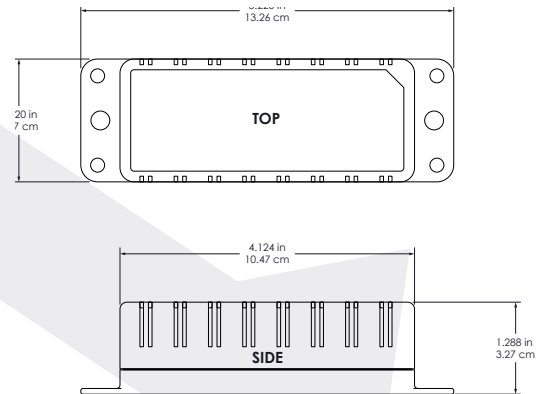
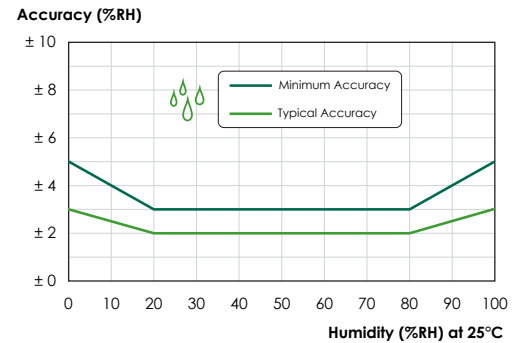
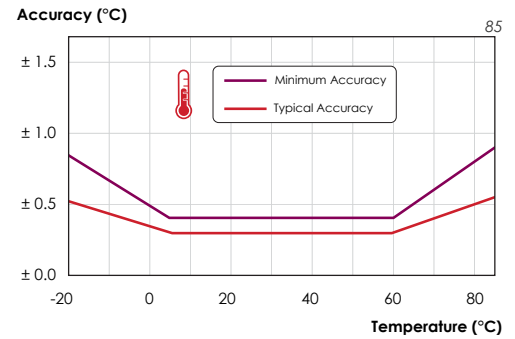
B

- A Graph Showing Data Trends
- B Interface with IP Surveillance Cameras
- C Live Sensor Values and Logging
- D Friendly Names per Sensor
- E International Support

Distributed in North America by:
INTERWORLD ELECTRONICS & COMPUTER IND. INC.
 T: 1-877-902-2979 or 1-425-223-4311 (Int'l Customers)
 F: 1-877-324-4324
 E: sales@interworldna.com
 W: http://www.interworldna.com

Specifications

On-Board Sensors	
Temperature	
Range	-20 to 85°C
Accuracy (typical)	± 0.3°C
Accuracy (minimum)	see graph
Relative Humidity	
Range	0 to 100% RH
Accuracy (typical)	± 2.0% RH
Accuracy (minimum)	see graph
Dewpoint	
	Calculated value, based on temperature & humidity
External Sensors	
Digital Sensor Ports	2
Max Digital Sensor Capacity	4
Hardware Features	
Ethernet	10/100 Mbps
Power	
Input	6 - 12 VDC (250mA typ., 350mA max.)
DC Power Input Plug	2.1mm DC barrel, center-positive
Power Supply Options	North American, British, Universal, None
Power Over Ethernet	IEEE802.3af (Watchdog 15 P Only)
“Reset” Button	Restore all to factory defaults
Physical	
Dimensions (WxHxD)	5.22" (13.26 cm) x 1.72" (4.37 cm) x 1.29" (3.27 cm)
Mounting	see diagram
Warranty	
	1 Year Standard Warranty
Regulatory	
	



Distributed in North America by:
INTERWORLD ELECTRONICS & COMPUTER IND. INC.
 T: 1-877-902-2979 or 1-425-223-4311 (Int'l Customers)
 F: 1-877-324-4324
 E: sales@interworldna.com
 W: <http://www.interworldna.com>

Please note the information contained herein is for informational purposes only. Technical claims listed depend on a series of technical assumptions. Your experience with these products may differ if you operate the products in an environment, which is different from the technical assumptions. Geist reserves the right to modify these specifications without prior notice. Geist makes no warranties, express or implied, on the information contained in this document.

10015301

Geist Americas

800.432.3219
geistglobal.com

Geist DCIM
 1.877.449.4150
geistglobal.com

Geist Europe

+44 (0) 1823.275100
geistglobal.com

Geist Asia

China
 +86.755.86639505
geistglobal.com

Hong Kong
 +852.81764860
geistglobal.com