

# ***Roll-Up III***™ **User's Guide**

The Portable Large Format Digitizer



**GTCO CalComp**  
PERIPHERALS

We at GTCO CalComp are proud of our digitizer products. We strive to bring you the best the technology has to offer. We urge you to visit our Web site, where we will post the latest information regarding updates and changes that may impact the information in this *User's Guide*.

Navigate to:

[www.interworldna.com](http://www.interworldna.com)

**GTCO CalComp**  
PERIPHERALS

# Table of Contents

<b>What is Roll-Up III?</b>	<b>5</b>
<b>Parts Checklist</b>	<b>6</b>
<b>What You Will Need to Use Roll-Up III</b>	<b>6</b>
<b>Setting Up Your Roll-Up III</b>	<b>7</b>
Software Configuration	7
Configuring Non-Wintab Applications	7
Installing the TabletWorks Driver	7
Hardware Configuration	8
USB Connection	9
RS232 Serial Connection	10
<b>Using the SuperSet Menu</b>	<b>11</b>
Changing the Digitizer's Orientation	12
Turning the Alarm Off and On	12
Configuring Your Roll-Up III for Specific Applications	13
Example: Configuring for a Specific Application	13
Table 1: SuperSet Menu Codes for Selected Applications	14
Table 2: Configuration Details for SuperSet Menu Codes	20
<b>Roll-Up III Tones</b>	<b>23</b>
Table 3: Roll-Up III Tones	23
<b>Introduction to the Custom Configuration Menu</b>	<b>24</b>
Communication Options	24
Output Format Options	24
Mode Options	25
<b>Using the Custom Configuration Menu</b>	<b>26</b>
<b>Care and Handling of Roll-Up III</b>	<b>28</b>
<b>Transporting Roll-Up III</b>	<b>29</b>
<b>Troubleshooting Guide</b>	<b>30</b>
Procedure A: Begin Troubleshooting	31
Procedure B: Troubleshooting	32
The Tablet Configuration Utilities	34

<b>Regulatory Statements and Warranty</b>	<b>36</b>
Radio and Television Interference	36
Canada	36
Declaration of Conformity	37
Japan	38
Bescheinigung des Herstellers/Importeurs	38
European Union Directives	39
Limited Warranty for the Roll-Up III	40

## What is the Roll-Up III?

The **Roll-Up III** belongs to a class of computer input devices called **graphic tablets**, or **digitizers**. A digitizer is an electronic tablet work surface. The position of a transducer, a handheld cursor or stylus, on the work surface of the Roll-Up III is converted—*digitized*—into data for computer processing. Data output from the Roll-Up III digitizer is in the form of an X/Y coordinate pair that pinpoints the location of the transducer on the tablet surface. The Roll-Up III is a specialized graphic digitizer that is specifically designed to be portable, so it can be taken to the job site.



**The Roll-Up III uses an electrostatic technology for digitizing with blueprints and nonconductive inks. If you are using black line drawings with conductive ink, the Super L Series Digitizers are more appropriate.**

The Roll-Up III works with many graphic, CAD, and estimating applications. These applications use the digitized data from the Roll-Up III to:

- Determine the dimensions of objects on drawings and blueprints
- Move the pointer on the display screen
- Create and manipulate objects in a graphic composition
- Trace a drawing, or other source material, to create an image on the display screen
- Select commands or functions from an application menu placed on the tablet surface
- Select items from a pull-down menu on the display screen

In order to send data from your Roll-Up III to your digitizing application, your Roll-Up III must be physically connected to your computer, and it must be able to transmit that data in such a way that the digitizing application recognizes and understands it. Before you set up your Roll-Up III, you should determine:

- The requirements of the digitizing software application you are using
- Whether your digitizing application requires software drivers to communicate with the Roll-Up III
- The hardware communications connection (Serial or USB) you will be using between the Roll-Up III and the computer

## Parts Checklist

- ✓ **Roll-Up III** digitizing tablet
- ✓ Transducer (stylus/pen, 4-button cursor, or 16-button cursor)
- ✓ USB Cable
- ✓ A CD (TabletWorks drivers, documentation, or third party software drivers)
- ✓ Accessory case – **Do not discard**
- ✓ Cardboard tube, insert and end caps – **Do not discard**
- ✓ *Roll-Up III Quick Start*

### **Optional Equipment** (Can be purchased separately)

- ✓ Computer interface cable with 9-pin connector for serial connection
- ✓ Power supply – required only for serial installations
- ✓ Deluxe Travel Bag

## What You Will Need to Use Roll-Up III

- A computer running a Windows operating system with a USB port, or an RS232C serial communication port. (Serial signal levels must conform to EIA RS232C specifications.)
- Application software that accepts digitizer input via the Wintab API, or application software that directly accepts digitizer input via the computer's RS232C serial port.

## Setting Up Your Roll-Up III

The instructions below describe how to set up your Roll-Up III. Before you begin, please take a moment to fill out and mail the Warranty Registration Card.

### Software Configuration


Software drivers provide the communication bridge between your digitizing software application and your Roll-Up III. You should install only the drivers necessary for the Roll-Up III to work with your application software. The GTCO CalComp-supplied *TabletWorks* CD supports *reduced functionality Wintab* and *TabCon*-compatible applications. If you are not sure which drivers are required, check Table 1 on page 14, or consult with your application vendor. A driver does not need to be installed if you are using the Roll-Up III with the GTCO CalComp QuikRuler III.

### Configuring Non-Wintab Applications

Many application programs provide configuration information for specific digitizers. If the Roll-Up III digitizer is not listed, you can use the configuration for GTCO Digi-Pad Type 5 or Type 5A (T5/T5A), Roll-Up II, CalComp 9100/9500, or Summagraphics Microgrid III or ID Series.

### Installing the TabletWorks Driver

Insert the CD into the CD-ROM drive on your computer. The installer will autoload. If it doesn't, click on the **Start** button on the Windows Task Bar and select *Run* from the menu. Type `X:\setup.exe` (**X** represents the CD drive letter). Follow the onscreen prompts to complete the installation.

A TabletWorks icon  will display in the System Tray on the Windows Task Bar. Right-click on the icon to display the TabletWorks Menu, which provides access to all the TabletWorks features.

## Hardware Configuration

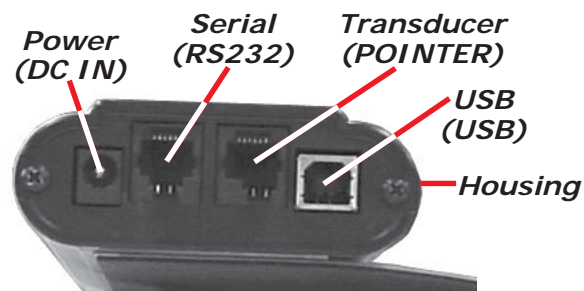
When you are using the USB interface, no data output configuration is required. However, when you choose the optional serial interface, the Roll-Up III must be configured to send data in a format that is compatible with the application software. Different applications have different requirements when interacting with a digitizer. The Roll-Up III has been designed to provide the appropriate serial requirements for a wide variety of graphic, CAD, and estimating applications using a simple code system. The SuperSet Menu on the surface of the Roll-Up III is used to enter the appropriate code for the software you are using. A table in the *Using the SuperSet Menu* section of this manual lists the SuperSet Codes for a wide variety of applications.

Determine, if you haven't already, which communication connection you will be using—USB or Serial.

**Note**

**Conductive materials, inks, or electronic devices on, under, or near the Roll-Up III can cause improper operation. See the *Troubleshooting* section for more details.**

- 1 Select a large, flat, nonmetal surface on which to place the Roll-Up III. Clear all items from the surface.
- 2 Remove the Roll-Up III from its cardboard tube container and unroll it on the selected surface.
- 3 Connect the transducer – cursor or stylus – to the appropriate jack on the digitizer's Connector Panel. The connector is keyed and will fit only the correct jack. Do not force it.




**Roll-Up III Connector Panel**

**Note**

**Do not attempt to remove the controller from the housing. Doing so could damage the digitizer and void your warranty.**

## USB Connection

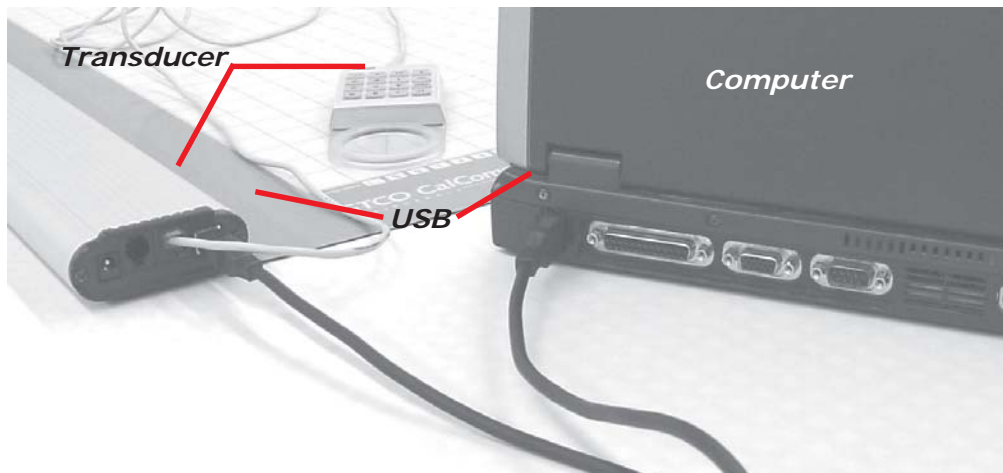
The Roll-Up III USB port connection is USB 1.1 and 2.0 compatible. When the digitizer is connected to the USB port, Windows will recognize that there is a new device connected. If Windows displays the *Found New Hardware* prompt, follow the onscreen instructions to complete the driver installation.

- 1 Connect the interface cable to the USB jack on the Roll-Up III Connector Panel. The connector is keyed and will fit only the correct jack. Do not force it.
- 2 Connect the other end of the USB cable to any one of the USB ports  on your computer or USB hub. The digitizer will beep four short tones, indicating it is powered On. See the *Roll-Up III Tones* section on page 23 for a complete table of the Roll-Up III tones.
- 3 SuperSet Codes are not applicable when using the USB connection.

**Note**

Power is supplied through the USB port. No additional power source is needed for this installation.

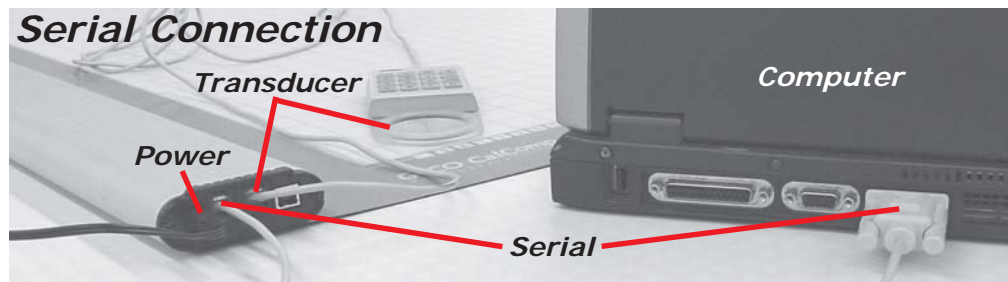
## USB Connections



## RS232 Serial Connection

If your software application is not Wintab-compliant, be sure to set the correct two-digit Application SuperSet Code before connecting the serial cable to the computer. SuperSet Codes can be found in Table 1. If your application is not listed in Table 1, find the configuration settings that apply to your application in Table 2 and use the corresponding SuperSet Code. If an appropriate SuperSet Code is not listed in Table 2, use the Custom Configuration Menu stored in the slot on the end of the Roll-Up III housing to configure your Roll-Up III.

- 1 Plug the power supply into an AC outlet. Connect the power supply to the appropriate jack on the Connector Panel. The digitizer will beep four short tones (see the *Roll-Up III Tones* section on page 23 for a complete table of Roll-Up III tones), indicating it is powered On.
- 2 Connect the RS232 serial cable to the serial jack on the Connector Panel. The connector is keyed and will fit only the correct jack. Do not force it.
- 3 Configure the SuperSet Code. The Roll-Up III comes from the factory with the SuperSet Code **S** **0** **1** pre-configured. (See *Using the SuperSet Menu*.)



## Using the SuperSet Menu

The SuperSet Menu is the row of buttons printed in the lower left and upper right corners of the digitizer.



The SuperSet Menu makes it possible for you to configure your Roll-Up III so that it sends the appropriate information for a serial connection to the software you're using on your computer (see Table 1 on page 14 for an extensive list of digitizer software applications and their codes). It is used to prepare the digitizer to receive specific, detailed custom configuration information from the Custom Configuration Menu for some serial installations. In addition, the SuperSet Menu can be used for both serial and USB connection configurations, to set and change the digitizer orientation, and to turn the digitizer alarm off and on. Use your stylus or cursor to click on the menu buttons to make your selections.

The **[S]** menu button initiates the **Select Mode**. Two-digit numeric codes are entered after Select Mode is activated. Most software supports Wintab using the TabletWorks drivers, whose SuperSet Code is **[S][0][1]** on the SuperSet Menu. The Roll-Up III comes from the factory with the SuperSet Code **[S][0][1]** pre-configured.

### Note

**The Select Mode will not work with the USB interface. USB talks to Wintab drivers exclusively.**

The **[L]** menu button sets your preferred digitizer orientation. The **[Speaker]** button toggles the digitizer alarm off and on. The **[P]** button activates the Custom Configuration menu.

When using the SuperSet Menu, a tone will sound indicating a successful selection when you click on the **[S]** or **[P]** buttons. Four tones will sound when you click on **[Speaker]** or **[L]**. (See the *Roll-Up III Tones* section on page 23 for a complete table of the Roll-Up III tones.) The number buttons **[0]** through **[9]** are active only after clicking on **[S]** for Select Mode.


### Note

**Units built before October 8, 2004, have serial Plug-N-Play enabled for SuperSet Code **[S][0][1]**. On these units, use **[S][9][9]** instead of **[S][0][1]**. This SuperSet Code has the same settings, but Plug-N-Play is disabled.**

## Changing the Digitizer's Orientation

The Roll-Up III lets you choose between two different digitizer orientations: you can orient the digitizer with the controller Housing on your right (the factory default), or you can orient it with the Housing on your left.

### To change the orientation of the digitizer:

- 1 Turn the digitizer to the desired orientation.
- 2 Relocate the origin by clicking on the  button on the SuperSet Menu that is located in the lower left corner of the digitizer. You will hear four short tones when you do this.




The orientation of the 20X24 Roll-Up III cannot be changed.

## Turning the Alarm Off and On

You can disable the alarm if you don't want to hear a tone each time the transducer button is pressed. When the alarm is off, you will still hear diagnostic and menu-related tones.

### To turn the alarm off and on:

- Click on the  button – which toggles the tones on or off – on the SuperSet Menu.

Note

The following is relevant only for RS232 serial installations. USB does not require configuration.

## Configuring Your Roll-Up III for Specific Applications

To configure your Roll-Up III for use with specific applications:

- 1 In Table 1, find the application program you will be using with your Roll-Up III. Note the corresponding SuperSet Code.
  - If your application program is not listed in Table 1, find the configuration settings in Table 2 that your application program requires and use the corresponding SuperSet Code.
  - If an appropriate SuperSet Code is not listed in Table 2, then use the Custom Configuration Menu (see the *Using the Custom Configuration Menu* section on page 26) to set up your Roll-Up III.
- 2 On the SuperSet Menu, click on the **[S]** button, then click on the two digits of the SuperSet Code indicated for your application.

You will hear four short tones after a successful menu configuration.

### Example: Configuring for a Specific Application

Suppose you wanted to configure your **Roll-Up III** to operate with Autodesk's AutoCAD application. You would:

- 1 Find the entry for AutoCAD in Table 1. The SuperSet Code is **01**.
- 2 Click on the **[S]** button on the SuperSet Menu. You will hear one short tone, indicating the digitizer is in **Select Mode**.
- 3 Click on the **[0]** button on the SuperSet Menu. You will hear one short tone. This enters the first digit of the SuperSet Code for AutoCAD.
- 4 Click on the **[1]** button on the SuperSet Menu. This enters the second digit of the SuperSet Code for AutoCAD.

You will hear four short tones, indicating that the configuration is complete. The Roll-Up III is now configured to operate with AutoCAD. Select Mode is no longer active. You can begin digitizing.

Note

For more information about digitizer software application driver requirements, please go to the Technical Support section of the GTCO CalComp Web site.

**Table 1: SuperSet Menu Codes for Selected Applications**

Program	Company	SuperSet Code
Access	Bautech	39
Advanced Construction Estim.	Software Shop Systems	28
A.G.E.	CEIA, Inc.	75
AGTEK Earthwork Engineering (DOS)	AGTEK Development Co.	09
APS	Gunold & Stickma	52
ARC/CAD	ESRI	01
ARC/INFO (DOS)	ESRI	12
ARC/INFO	ESRI	01
ARC/GIS	ESRI	01
ARC/View	ESRI	01
ARCT, ACA		47
ArenaSoft Estimating	Arena Soft	01
ATLAS*DRAW low res	Strategic Locations Planning	07
ATLAS*DRAW high res	Strategic Locations Planning	08
ATLAS GIS	Strategic Mapping	01
AutoCAD	Autodesk, Inc.	01
Autodesk 3D Studio	Autodesk, Inc.	01
AutoSketch	Autodesk, Inc.	01
Autoship	Coastdesign	01
Autoyacht	Coastdesign	01
Autumn	Zenographics	36
Batisoft		46
Best Est II	Bird Construction Software	23
Bid Team	Construction Data Control, Inc.	58
Bidpoint	Vertigraph, Inc.	01
Bidworx for DOS	Vertigraph, Inc.	31
Bidworx for Windows	Vertigraph, Inc.	01
BP-340	Barudan America, Inc.	77
BuildNet	Homesphere	09
Buildsoft	Homesphere	09
BuildWare	1SqFt	01
BVH-Gregg Estimating	BVH Gregg Incorporated	04
Cadkey low res	Cadkey	18
Cadkey high res	Cadkey	25
Callidus	Oak Leaf Software	81
Carlson Takeoff	Carlson Software	01
Carpet Estimating Systems	Ramco	54
Civilcad	Bloomfield Computer Services	03
CMS Estimating	Contractor Management Systems	29
CNG Survey	CNG Survey	05

<b>Program</b>	<b>Company</b>	<b>SuperSet Code</b>
Coastal	Oceanographics	42
Cogo-PC Plus	Civilsoft	01
COINS Estimating	Shaker Computer & Management	41
Composer Gold	Building Systems Design	42
Computer Methods Est.	Computer Methods	45
Comquest	Pinnacle Technology	38
Conception 3D	Serbi	22
Construction Link	The Construction Link	04
Contour Plus	Civilsoft	01
Cost Engineer, The	Cost Engineering Technologies	49
Counterpoint	Counterpoint	04
CPS/SP	Radian Corp.	34
Curve Digitizer	West Coast Consultants	33
Cut & Fill (DOS)	Paydirt Systems, Inc.	31
Cut & Fill/Precision (DOS)	Paydirt/Timberline	42
<hr/>		
Datacad	Microtecture	14
DATAMINE	Datamine International	82
Deed Mapping System	US Soft Tech	13
DEEM	Met-Coil, Ltd.	69
Design CAD	American Small Business Computers	01
Designer	Micrografix	02
DigiPlus	Civilsoft	01
DigiPro	Prosoft	66
Digitool	Roctek Corp.	24
DigiWin	Prosoft	68
DMS Premiere	Tally Systems	57
DQ 2000	DQ Technologies, Inc.	85
DrawPlus	Micrografix	02
<hr/>		
Earth Graphics - Deluxe	Earth Graphics	01
Earthwork	Civilsoft	01
Earthwork 3D	AGTEK Development Co.	01
Earthwork Estimating	Ground Rules	01
Earthworks	Tally Systems, Inc.	01
Earthworks (for Windows)	Trakwear	01
-OR-		
Earthworks (for Windows)	Trakwear	56
Easydij EJBIN#4	Geocomp, Ltd.	16
Easydij EJAF#2	Geocomp, Ltd.	35
Easydij EJBIN#30	Geocomp, Ltd.	19
Easy Cad	Easy Cad	01
Eclare	Prosoft, Inc.	66
Edge, The (DOS)	Advanced Estimating	01

<b>Program</b>	<b>Company</b>	<b>SuperSet Code</b>
Edge, The	Advanced Estimating	01
Equinox	Roctek Corp.	64
ESI 6000 Estimating System	McCormick Systems	09
EST-Duct Estimating	Technical Sales International	01
EST-Mechanical	Technical Sales International	01
Estimagic	Estimagic	63
Estimat-All	Safeharbor Software, Inc.	54
Estimate Software	Estimate Software	04
Estimation, Inc. (700 Series)	Estimation, Inc. (Tradepower)	89
Estimation, Inc. (800 & Win Series)	Estimation, Inc. (Tradepower)	88
Execucom	Execucom Systems Corp.	36
Expose	Roctek Corp.	64
Fastcad	Evolution Computing	26
FastPIPE - Gold	FastEST, Inc.	01
Floor Rite	RFMS	01
GAP 01	GTCO CalComp	39
Gemini	Excel	79
Generic CADD	Generic Software, Inc.	01
Geoquest	Softdesk	08
GM-SYS	NW Geophysics Association, Inc.	13
GraphPlus	Micrografix	02
GTCOTEST (default)	GTCO CalComp	01
GTCO Wintab Driver	GTCO CalComp	01
HALO products	Media Cybermetics	13
Hotdij	Geocomp, Ltd.	35
IBM GFIS	IBM	55
Ice System, The (DOS)	MC2	56
ICE 2000	MC2	01
IDRISI	Clark University	74
IKE (DOS)	Comput-Ability, Inc.	72
IKE	Comput-Ability, Inc.	42
Imagine 8.X	ERDAS, Inc.	61
Insite Earthwork Estimating	Software Shop Systems	19
Insite 2	Software Shop Systems	28
Insite Sitework	Insite Software	01
Insulcomp	Technical Sales International	42
JAVA	Jandel Scientific	24
Job Boss	Small Systems Design, Inc.	39
Job Power	Job Power	42

<b>Program</b>	<b>Company</b>	<b>SuperSet Code</b>
Kolvin Pro	Damon, Inc.	01
Landmarke	Cambridge Software, Inc.	23
Lasercad	The Software Machine	01
Logdigi, Planimeter	The Logic Group	12
Lumena	Time Arts, Inc.	10
Mach Lite	Ziatek, Inc.	04
Mach 2	Ziatek, Inc.	04
Mach 4	Ziatek, Inc.	83
MapGrafix	Comgrafix, Inc.	02
Market America	CACI	11
MasterBuilder (DOS)	Intuit	86
MasterBuilder (2003, 2004)	Intuit	01
Master Touch	Integrated Measurement Systems	35
Measure Mate	Measure Mate (Australia)	01
Measuremate/Measuring Calc.	Paladin Measuring Systems	64
Measure Master	Estimator's Corner	51
Mechanical Construction Manager	Mechanical Professional Services	73
Melco	Melco	78
Metricom	ADII Dynalog	71
Micromine	Micromine Pty., Ltd.	27
Microstation PC	Intergraph Corp.	09
MIKE (DOS)	Comput-Ability, Inc.	68
MIKE	Comput-Ability, Inc.	42
Mirage	Zenographics	36
Molitors & Zimmer	Molitors & Zimmer Estimating Syst.	67
NCE Estimator 2000	National Computer Est., Inc.	01
On Screen Take-Off	OnCenter Software	01
Pagemaker	Aldus Corp.	02
PAD	ModaCAD	50
Paydirt Cross-Section (DOS)	Spectra-Physics Laserplan, Inc.	31
Paydirt Roadwork (DOS)	Spectra-Physics Laserplan, Inc.	31
Paydirt Sitework (DOS)	Spectra-Physics Laserplan, Inc.	31
Paydirt Sitework Basic (DOS)	Spectra-Physics Laserplan, Inc.	31
Paydirt Sitework 3.01 for Windows	Spectra-Physics Laserplan, Inc.	05
Paydirt Sitework 3.2 for Windows	Spectra-Physics Laserplan, Inc.	01
Paydirt	Trimble Navigation	01
P-CAD	Personal CAD Systems, Inc.	20
PC.BAT		46

<b>Program</b>	<b>Company</b>	<b>SuperSet Code</b>
PC Paintbrush	Z Soft	10
PC Paintbrush/Windows	Z Soft	02
PC3D	Jandel Scientific	24
PDS/SHADOW	Polygon Software & Technologies	53
PG01	Hirsch International	22
Phoenix Estimator	Phoenix Estimating	87
Picturemaker	Cubicomp Corp.	15
Piping/DWV Estimating	Esscomate	32
Polynest	Polygon Software	40
Power Takeoff	Ziatek, Inc.	04
Precision Estimating/Digitizer (DOS)	Timberline Software	37
Precision Estimating/Digitizer	Timberline Software	01
ProBid	Promation	06
Procad	Teksoft	13
Prodesign II	American Small Bus. Comp., Inc.	01
ProEst Estimating Digitizer Takeoff	CMS	04
ProExcel	Excel	80
Professional Estimating	Enterprise Computer Systems, Inc.	01
PTO	CDCI	58
QED	Roctek Corp.	64
Quest Earthwork	Quest Solutions	01
Quest Estimator	Quest Solutions	01
QuickBid	OnCenter Software	01
QuickCalc	Constructive Computing	58
QuickCALC - Windows	Constructive Computing	01
QuickDirt	Constructive Computing	23
QuickDirt - Windows	Constructive Computing	01
QuickDirt II/QuickEst III	Constructive Computing	58
QuickEst	Constructive Computing	43
QuickEst - Windows	Constructive Computing	01
QuickMeasure	Tally Systems, Inc.	01
QuickPen AutoBid	QuickPen International	04
QuickPen CAD	QuickPen International	09
QuickPen Estimating	QuickPen International	59
QuoteExpress	Quote Software	01
Ramco Estimating System	Ramco	54
Remodeling Estimator	National Computer Estimating, Inc.	01
Right Hand Man	Johnston & Associates, Inc.	04
Roadeng	Softree Technical Systems, Inc.	27
Robocad, Robosolid	RoboSystems International	21
Rock-it	Ziatek	04
Roof Cad	True North Estimating Systems	12

<b>Program</b>	<b>Company</b>	<b>SuperSet Code</b>
Roof Estimator 3000	Essential Technology	65
SDP	Civilsoft	01
Sheetmetal/Ductwork	Esscomate	32
SigmaPlot	Jandel Scientific	24
SigmaScan	Jandel Scientific	24
SiteCalc	Eagle Point	01
Smartcam	Point Control Co.	17
Softplan	Softdesk	08
Sonnet CAD	Interworld Electronics	03
Sonnet Gap	Interworld Electronics	20
Subway	Roctek Corp.	64
Starbid	Geac	29
Super-Duct, Super-Pipe	Wendes Mechanical Consulting	48
Surpac	Surpac Mining Systems	27
Takeoff 2000+	Comput-Ability	42
Takeoff Pro	WinEstimator, Inc.	01
TakeoffTool	US Cost	01
Terra Model (DOS)	Plus 3 Software	09
Terramodel	Trimble Navigation	01
Terrasoft	Digital Resource Systems	01
Topographics IIID	CEIA, Inc.	75
Tops II Digitizer	Software Shop Systems	28
TOSCA	Clark University	74
Tradesman	Tradesman Software	01
Turbo Map CAD	U.S. Softtech	01
Versacad	Versacad Corp.	01
Vision	Bidtek	70
Visual Takeoff +	Comput-Ability, Inc.	42
Wall to Wall Estimator	Ramco	11
WenDuct Takeoff	Wendes Systems, Inc.	48
WenPipe	Wendes Systems, Inc.	48
Wilcom Ltd.	Wilcom Ltd.	76
Windows	Microsoft	01
WinEst Pro & WinEst Pro Plus	WinEstimator, Inc.	11
WinEx & WinEx Pro	Roctek Corp.	01
WinMeasure	DeLoach Corporation	01
WinScale	Roctek Corp.	01
2D CAD	West Coast Consultants	33

**Table 2: Configuration Details for SuperSet Menu Codes****Note**Max  $\approx$  100 coordinates/second

lpi = lines per inch    lpm = lines per millimeter

Code	Commun.	Output Options	ASCII Options
01	9600,N,8,1	GTCO Binary, 1000 lpi, Cont Max	
02	9600,N,8,1	GTCO Binary, 1000 lpi, Cont Incr	
03	9600,N,8,1	GTCO Binary, 1000 lpi, Cont Max	
04	9600,N,8,1	GTCO Binary, 1000 lpi, Point	
05	9600,N,8,2	GTCO Binary, 1000 lpi, Cont 100	
06	9600,N,8,1	GTCO Binary, 1000 lpi, Point	
07	9600,N,8,1	GTCO Binary, 200 lpi, Cont 100	
08	9600,N,8,1	GTCO Binary, 1000 lpi, Cont 100	
09	9600,N,8,1	GTCO Binary, 1000 lpi, Cont 12	
10	9600,N,8,1	GTCO Binary, 200 lpi, Cont Max	
11	9600,N,8,1	GTCO Binary, 1000 lpi, Cont Max, Alarm	
12	9600,N,8,1	GTCO ASCII, 1000 lpi, Point	Pb, Sp, CR, LF
13	9600,N,8,1	GTCO Binary, 1000 lpi, Cont 12	
14	9600,N,8,1	GTCO Binary, 200 lpi, Cont 100	
15	9600,N,8,2	GTCO Binary, 200 lpi, Cont 100	
16	9600,E,7,1	GTCO Binary, 200 lpi, Point	
17	9600,E,7,2	GTCO Binary, 200 lpi, Cont Max	
18	9600,E,7,2	GTCO Binary, 200 lpi, Cont Max	
19	9600,N,8,1	GTCO Binary, 1000 lpi, Point	
20	1200,N,8,1	GTCO Binary, 1000 lpi, Cont 100	
21	4800,N,8,1	GTCO Binary, 40 lpm, Cont 12	
22	4800,N,8,1	GTCO Binary, 1000 lpi, Cont Max	
23	2400,N,8,1	GTCO Binary, 1000 lpi, Cont 12	
24	9600,N,8,2	GTCO Binary, 1000 lpi, Cont Max	
25	9600,N,8,2	GTCO Binary, 1000 lpi, Cont Max	
26	9600,N,8,2	GTCO Binary, 200 lpi, Point	
27	9600,N,8,1	GTCO ASCII, 40 lpm, Point	Pb, Sp, LF
28	4800,O,7,2	GTCO ASCII, 100 lpi, Point	Sp, CR, LF
29	1200,O,7,2	GTCO ASCII, 1000 lpi, Point	Pb, CR, LF
30	1200,N,8,1	GTCO Binary, 40 lpm, Cont 12	
31	9600,O,7,2	GTCO ASCII, 1000 lpi, Point	Pb, CR, LF
32	9600,E,7,2	GTCO ASCII, 1000 lpi, Point	Sp, CR
33	2400,E,7,1	GTCO ASCII, 100 lpi, Cont 12	Pb, Sp, CR, LF
34	9600,E,7,1	GTCO ASCII, 1000 lpi, Point	Pb, Sp, CR, LF
35	9600,E,7,1	GTCO ASCII, 1000 lpi, Point	Pb, Sp, CR, LF

Code	Commun.	Output Options	ASCII Options
36	9600,E,7,1	GTCO ASCII, 1000 lpi, Cont 12	Sp, CR, LF
37	2400,N,8,1	GTCO ASCII, 1000 lpi, Point	Pb, Sp, CR, LF
38	2400,E,7,2	GTCO ASCII, 1000 lpi, Point	Pb, Sp, CR, LF
39	1200,O,7,1	GTCO ASCII, 1000 lpi, Cont 12	Pb, CR
40	1200,N,8,1	GTCO ASCII, 1000 lpi, Point	Pb, Sp, CR, LF
41	9600,E,7,1	GTCO ASCII, 1000 lpi, Point	Pb, Sp, CR
42	9600,N,8,1	GTCO ASCII, 1000 lpi, Point	Pb, Sp, CR, LF
43	1200,E,7,1	GTCO ASCII, 1000 lpi, Point, Alarm	Pb, Sp, CR
44	9600,N,8,1	GTCO ASCII, 1000 lpi, Cont 12, Alarm	Pb, Sp, CR, LF
45	9600,N,8,2	GTCO ASCII, 100 lpi, Point, Alarm	Pb, CR, LF
46	9600,E,7,2	GTCO Binary, 1000 lpi, Cont 100	
47	9600,O,7,2	GTCO ASCII, 1000 lpi, Cont 100	Pb, CR
48	9600,E,7,1	GTCO ASCII, 1000 lpi, Point	CR, LF
49	1200,E,7,1	GTCO ASCII, 1000 lpi, Cont 12	Pb, CR
50	9600,E,8,1	GTCO ASCII, 40 lppm, Point, Alarm	Pb, Sp, CR, LF
51	1200,N,7,2	GTCO ASCII, 1000 lpi, Point	Pb, CR, LF
52	9600,E,8,1	GTCO Binary, 1000 lpi, Cont 100, Alarm	
53	9600,N,8,1	GTCO ASCII, 1000 lpi, Cont Max	Pb, CR
54	9600,N,8,1	GTCO ASCII, 1000 lpi, Cont 12	Pb, CR
55	9600,O,7,2	GTCO ASCII, 1000 lpi, Cont Max, Alarm	Pb, CR
56	9600,E,7,2	GTCO ASCII, 1000 lpi, Point	Pb, Sp, CR, LF
57	9600,O,7,1	GTCO ASCII, 1000 lpi, Point	Pb, Sp, CR, LF
58	9600,N,8,1	GTCO ASCII, 1000 lpi, Cont 12	Pb, CR, LF
59	1200,E,7,1	GTCO ASCII, 1000 lpi, Point, Alarm	Pb, Sp, CR
60	9600,O,7,1	GTCO ASCII, 1000 lpi, Point, Alarm	Pb
61	4800,N,8,1	GTCO ASCII, 1000 lpi, Point	Pb, CR, LF
62	2400,N,8,1	GTCO ASCII, 1000 lpi, Cont 12	Pb, CR, LF
63	1200,O,7,1	GTCO ASCII, 1000 lpi, Point	Pb, Sp, CR, LF
64	9600,N,8,1	GTCO ASCII, 1000 lpi, Point	Pb, Sp, CR, LF
65	2400,N,8,1	GTCO Binary, 1000 lpi, Cont 100	
66	9600,O,7,2	GTCO ASCII, 1000 lpi, Point	Pb, Sp, CR, LF
67	9600,N,8,1	GTCO ASCII, 1000 lpi, Cont 12, Alarm	Pb, CR
68	9600,O,7,2	GTCO ASCII, 100 lpi, Point	Pb, Sp, CR, LF
69	9600,E,7,1	GTCO ASCII, 40 lppm, Point	CR, LF
70	1200,N,8,1	GTCO ASCII, 100 lpi, Point, Max, Alarm	Sp, CR

Code	Commun.	Output Options	ASCII Options
71	9600,N,8,1	GTCO Binary, 40 lpm, Cont	
72	1200,O,7,2	GTCO ASCII, 100 lpi, Point	Pb, Sp, CR, LF
73	9600,N,8,1	GTCO ASCII, 1000 lpi, Point	CR, LF
74	9600,N,8,1	GTCO ASCII, 1000 lpi, Cont 100, Alarm	Pb, Sp, CR, LF
75	9600,N,8,1	Calcomp ASCII 3, 1000 lpi, Point	CR
76	9600,N,8,1	Summa ASCII 2, 10 lpm, Point	CR
77	9600,N,8,1	Summa ASCII 2, 10 lpm, Cont 100	CR
78	2400,N,8,1	Summa Binary, 10 lpm, Point	
79	9600,O,7,2	Summa ASCII 1, 10 lpm, Cont 100	LF
80	9600,O,8,1	Summa Binary, 10 lpm, Point, Alarm	
81	9600,E,7,2	Summa ASCII UIOF, 40 lpm, Point	CR, LF, Decimal
82	9600,N,8,1	GTCO ASCII, 1000 lpi, Point, Max, Alarm	Pb, Sp, CR, LF
83	9600,N,8,1	GTCO ASCII, 1000 lpi, Cont Incr	Pb, Sp, CR
84	9600,N,8,1	GTCO ASCII, 1000 lpi, Point	Pb, LF
85	9600,N,8,1	Summa ASCII UIOF, 1000 lpi, Point	Pb, LF
86	<b>*Special</b>		
87	<b>*Special</b>		
88	<b>*Special</b>		
89	<b>*Special</b>		
90-98		User configuration storage locations	
99	9600,N,8,1	GTCO Binary, 1000 lpi, Cont Max	

---

**\*86-89 require special firmware to activate.**

## Roll-Up III Tones

The Roll-Up III produces an *alarm* in the form of audio tones to inform you of various events. The table below describes the kinds of tones you might hear while operating the digitizer.

**Table 3: Roll-Up Tones**

Length	Number of times	Meaning
Short	Four at power up	Diagnostics passed
Short	Four	Successful end of menu mode
Short	Once	Transducer switch pressed, if the alarm tone is enabled
Short, once per second	Continuously	Transducer not attached
Medium	Three	Menu mode aborted
Medium	Three at power up	Configuration error*
Medium, once per second	Continuously	Configuration Menu mode; waiting for Alignment Point 1
Short, twice per second	Continuously	Configuration Menu mode; waiting for Alignment Point 2
Long, once per second, followed by short	Eight long beeps, followed by four short	Grid disconnected*
Continuously on	At power up	Diagnostics failed*

**Short = 1/16 second      Medium = 1/4 second      Long = 1/2 second**

\**Configuration error tones, Grid disconnected tone, or Diagnostics failed tones* indicate a serious problem. If you hear any of these tones, call GTCO CalComp Technical Support at 410.312.9221.



You might hear tones produced by the Roll-Up III which are actually sent by your application program. (Programs can send commands to the digitizer to turn the audio tone generator on and off.) If you hear tones during digitizing, and they don't correspond to the tones listed in the table above, they are produced by the application program.



This information applies to serial installations only.

## Introduction to the Custom Configuration Menu

The Custom Configuration Menu is used to relay configuration information to the Roll-Up III in those cases where Table 1 and Table 2 do not supply that information or a SuperSet Menu Code for the graphic application software you are using. You will use the Custom Configuration Menu to configure the Roll-Up III for a specific baud rate, data format and other operating characteristics that your software requires for communication with the digitizer. The Custom Configuration Menu is located in the slot at the end of the Roll-Up III housing.

The configuration parameters for the Roll-Up III are divided into three categories:

- Communication Options
- Output Format Options
- Mode Options

### Communication Options

- **Baud** The rate, in bits/second, at which characters are transmitted across the RS232C serial interface. Choices are: 1200, 2400, 4800, 9600, 19200, or 38400.
- **Data Bits** Data bits represent the actual data being sent from one device to another. Both devices must be set for the same number of data bits. Choices are: Seven (7), or Eight (8).
- **Stop Bits** Each character has one or two stop bits, which tell the receiving device that a character is complete. The number of stop bits usually does not matter. Setting for two stop bits instead of one may overcome a mismatch in parity or data bits. Choices are: One (1), or Two (2).
- **Parity** One bit can be allocated for parity (parity is a simple error-detecting scheme). Both devices (sending and receiving) must be set for the same parity—either odd parity, or even parity—or they must be set for no parity. Choices are: None (N), Even (E), or Odd (O).

### Output Format Options

- **GTCO** Selects GTCO-compatible formats. See Advanced Programming Information in the Roll-Up III Online Help for greater detail on GTCO format structure. Choices are: Binary, or ASCII.

- **CalComp** Selects CalComp-compatible formats. See Advanced Programming Information in the Roll-Up III Online Help for greater detail on CalComp format structure. Choices are: Binary, ASCII 1, ASCII 2, ASCII 3, or ASCII 4.
- **Summa** Selects Summagraphics-compatible formats. See Advanced Programming Information in the Roll-Up III Online Help for greater detail on Summagraphic format structure. Choices are: Binary, or ASCII.

ASCII formats can be modified by including, or excluding, a button code, space, decimal point, carriage return, or line feed, depending on whether GTCO, CalComp, or Summa formats have been selected.

- **Button** Defines whether the Pushbutton (Pb) value is included in the ASCII output report. This option is available only with GTCO formats. Choices are: Include, or Exclude.
- **Space** Defines whether the Space (Sp) character (hex 20) is included in the ASCII output report as a delimiter between the X and Y coordinate values. This option is available only in GTCO formats. Choices are: Include, or Exclude.
- **Decimal** Defines whether the period character (hex 2E) is included in the ASCII output report between the units and tenths digits. This option is available only in Summagraphics formats. Choices are: Include, or Exclude.
- **Return** Defines whether the Carriage Return (CR) character (hex 0D) is included in the ASCII output report as a terminator. This option is available in GTCO and Summagraphics formats. Choices are: Include, or Exclude.
- **Line Feed** Defines whether the Line Feed (LF) character (hex 0A) is included in the ASCII output report as a terminator. This option is available in GTCO, CalComp and Summagraphics formats. Choices are: Include, or Exclude.

## Mode Options

- **Mode** Defines how output reports are sent from the digitizer. Choices are: Point, Line, Continuous, Line Incremental, or Continuous Incremental.
- **Rate** Determines how fast output reports will be transmitted from the digitizer. Choices are: 12, 50, or 100 reports per second.
- **Resolution** The smallest reported value returned by the digitizer. Choices are: 1000 lpi, 2000 lpi, 4000 lpi, 40 lpmm, 100 lpmm, or 150 lpmm.

See the Advanced Programming Information section in the Roll-Up III Online Help at [www.gtcocalcomp.com](http://www.gtcocalcomp.com) for more details.

## Using the Custom Configuration Menu

If your application is not represented in the SuperSet Menu and does not have a SuperSet Code, or if a different configuration is required, you can use the Custom Configuration Menu to configure the Roll-Up III. The Custom Configuration Menu, pictured here, is stored in the slot at the end of the Roll-Up III housing. The Custom Configuration Menu replaces the 24 switches that were associated with older GTCO digitizers.

Communication Options		Output Format Options			Mode Options	
Baud	Data Bits	GTCO	CalComp	Summa	Mode	Resolution
1200	7	Binary	Binary	Binary	Point	100 Ipi
2400	8	ASCII	ASCII 1	ASCII 1	Line	200 Ipi
4800	Stop Bits	Button	ASCII 2	ASCII 2	Cont	1000 Ipi
9600	1	Include	ASCII 3	Decimal	Line Incr	2000 Ipi
19200	2	Exclude	ASCII 4	Include	Cont Incr	10 Ipmm
38400	Parity	Space	Line Feed	Exclude	Rate	40 Ipmm
	Even	Include	Include	Return	12	100 Ipmm
	Odd	Exclude	Exclude	Include	50	
	None			Exclude	Max	
	Point 1					Point 2

*Custom Configuration Menu Alignment Points*

The configurations you set up can be stored for recall at a later time in any of the nine user-definable SuperSet Menu locations—codes 90 through 98. This allows the Roll-Up III configuration to be easily switched between applications, when you have such a requirement.

### To configure the Roll-Up III using the Custom Configuration Menu:

- 1 Place the Custom Configuration Menu card, or the copy, anywhere in the active area of the digitizer. The entire menu must be in the active area. A piece of tape can be used to keep it in place during the configuration process.
- 2 Click on the **[P]** button on the SuperSet Menu. The alarm will beep slowly, indicating that the Custom Configuration Menu Mode is now ready to receive Alignment Point information.
- 3 You will tell the Controller where the Custom Configuration Menu is physically located on the digitizer by clicking on the Alignment Points. Click on Alignment Point 1, the white dot in the small blue square labeled *Point 1*, in the lower left corner of the menu. The alarm will beep rapidly, indicating that the system is waiting to receive Alignment Point 2.
- 4 Click on Alignment Point 2, the white dot in the small blue square labeled *Point 2*, in the lower right corner of the menu. After Alignment

Point 2 is selected, the alarm will sound only if the transducer passes over an active block on the menu.



**If invalid alignment points are selected, or if the menu is not entirely in the digitizer's active area, the Custom Configuration Menu Mode will be aborted. This is indicated by three medium tones from the alarm.**

- 5 Configure the Roll-Up III by selecting the function blocks that correspond to the settings your software will need to communicate with the digitizer.
- 6 Review the configuration to ensure that the proper settings have been selected. Pass the transducer down each group of options; the alarm will sound when the transducer is over the active choice. Some groups may be inactive, based on the options selected. Click on a desired setting in a group to change it. To cancel all settings, click in the active area outside the menu.
- 7 When you have finished making your selections, you can save the configuration. If you choose to save it *temporarily*, the configuration will be remembered only until another SuperSet Code is entered. If you never change the configuration of your Roll-Up III from the custom one you just entered, the *temporary* configuration will always be used. However, if you expect to be switching between configurations and want to save the custom one for later recall, you can assign the configuration to a special user-definable SuperSet Code.

■ **To save the configuration temporarily:**

Click on the **[P]** button on the SuperSet Menu. You will hear four short tones to indicate you successfully saved the custom configuration. The configuration is saved in a temporary location, where it will be retained even when the unit is powered off or reset. However, if another SuperSet Code is entered, this temporary configuration is lost and cannot be recalled without configuring the Roll-Up III again.

■ **To save the configuration in a user-definable location:**

As indicated in Table 2, the codes 90 through 98 are available as storage locations for user-defined custom configurations. Simply click on the **[S]** button and click on a two-digit number between 90 and 98. Your custom configuration will be saved under that code number for future recall. You will hear four short tones when you successfully save the custom configuration. Saved configurations allow you to switch quickly between applications. Storage locations 90 through 98 retain the saved configurations even when the Roll-Up III is turned off or reset.

## Care and Handling of Roll-Up III

The Roll-Up III was designed to be both portable and durable. As with any product, it requires proper care and handling for reliable operation. By following these recommendations, your Roll-Up III digitizer will provide you with many years of service:

- Always use the Roll-Up III on a flat surface, where no part of the unit is unsupported.
- Before moving the digitizer, disconnect the transducer, interface cable, and power supply, if connected.
- Before moving the digitizer, roll it up. The housing along the side of the digitizer is designed as a rolling aid and it allows you to easily control the rolling action. (See the *Transporting Roll-Up III* section on the next page for specific moving instructions.)
- Don't permanently attach anything to the digitizer.
- Don't use sharp instruments on or near the Roll-Up III to avoid scratching or cutting it. Cuts in the digitizer will void your warranty.
- Don't crease, dent, or abuse the digitizer. Creases can damage the digitizer structure. Severe creases or abuse will void your warranty.
- Clean your Roll-Up III with any mild, nonabrasive household cleaner. Rubbing alcohol is recommended. Do not apply liquid directly to the surface of the Roll-Up III. Spray the cleaning solution on a cloth and wipe it over the surface. After cleaning, dry the surface to avoid possible digitizing errors.

## Transporting Roll-Up III

You *must* transport your Roll-Up III using the factory-supplied shipping materials—heavy gauge cardboard tube, insert and end caps. Failure to do so could result in serious damage to the unit and may void your warranty.

- 1 Disconnect the transducer and interface cable from the Roll-Up III and the computer. Remove all material from the digitizer.
- 2 Grasp the controller housing firmly with both hands and roll it toward the opposite side of the digitizer. The housing and the printing on the digitizer surface must be on the inside of the roll. The roll diameter should be **just smaller** than the inside diameter of the factory-supplied shipping tube. When correctly rolled, only the digitizer's black back will be exposed.



**Do not roll the Roll-Up III too tightly. Rolling too tightly could damage the electronic grid.**

- 3 Insert the rolled digitizer into the shipping tube and allow it to fully unroll against the inside of the tube. Place the factory-supplied insert into the center of the rolled digitizer for support.
- 4 Place the accessories in the accessory case and put it inside the hollow insert. Place the factory-supplied end caps on the tube to seal it. Place the tube in the optional Deluxe Travel Bag.



**The Deluxe Travel Bag is intended to be used only in conjunction with the factory-supplied heavy gauge cardboard tube, insert and end caps. *The Deluxe Travel Bag does not provide complete protection if used alone.* The product will be subject to damage not covered by the warranty, if not protected by the tube, insert and end caps. If you have misplaced or disposed of these items, contact GTCO CalComp (410.381.6688) for replacements.**

## Troubleshooting Guide

As with any computer peripheral, Roll-Up III problems sometimes do occur. Most of these problems are easy to find and correct. This troubleshooting guide provides clear instructions for finding and solving all common digitizer problems. In most cases, you will be able to quickly take care of the problem yourself by following these steps:

### 1 Install properly first.

This troubleshooting guide assumes you have already correctly installed your Roll-Up III according to the detailed instructions in the *Setting Up Your Roll-Up III* section. If you have not followed the step-by-step instructions in that section, do so now.

### 2 Work through the troubleshooting flowcharts on the following pages in this troubleshooting guide.

Record any unusual observations. Your notes will be useful if you need assistance from GTCO CalComp later.

### 3 If your system still doesn't work...

Call our Technical Support Department at 410.312.9221. Be prepared to discuss the observations you made while troubleshooting. A Technical Support Specialist will help you resolve the problem as quickly as possible.

**Note**

Refer to the Roll-Up III Tones table on page 23, while using this *Troubleshooting Guide*.

If you are experiencing erratic behavior with your digitizer, make sure that no conductive materials are being used. This includes the graphite in pencil lead, some black plotter ink, and digitizing on plastic or Mylar. No electronic devices should be sitting on or near the digitizer, including keyboards, mice, calculators, etc. If any of these describes normal working conditions, the Super L Series Digitizers would be more suited to your environment.

**Note**

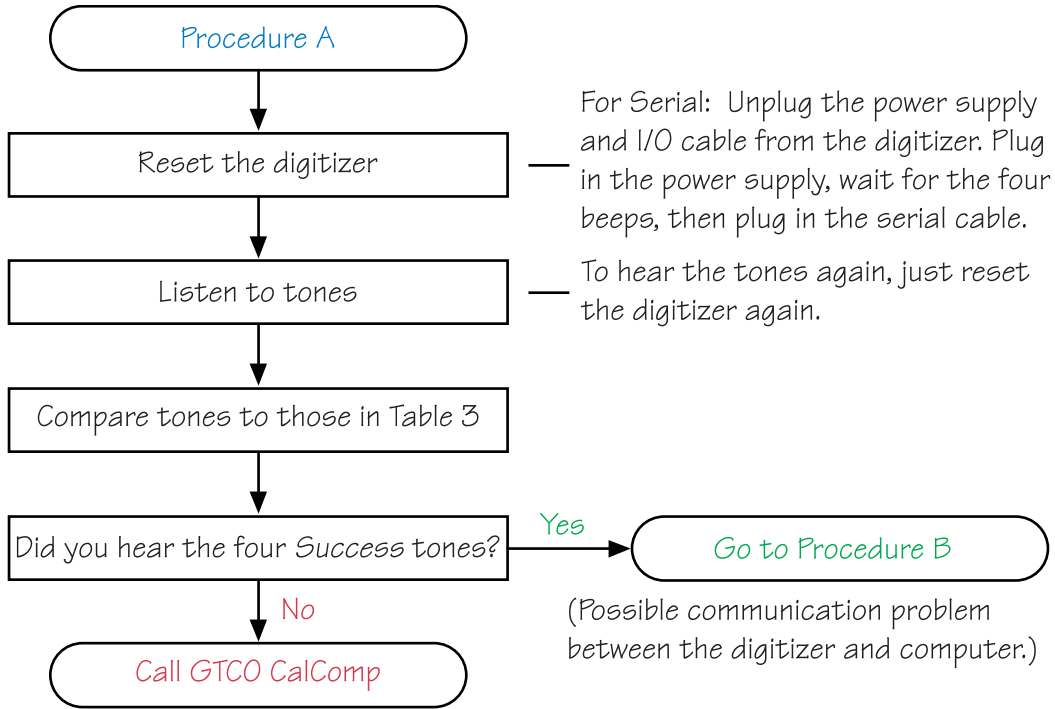
**Tablet Not Found:** If you are using a USB connection and the digitizer is not found, either disconnect and reconnect the USB cable, or restart the system.

**Load Driver:** If a window pops up telling you to load a driver every time you power-on, and your application software doesn't use a driver, you should change the power-on default SuperSet Code to **S 9 9**, or load the driver from the TabletWorks CD.

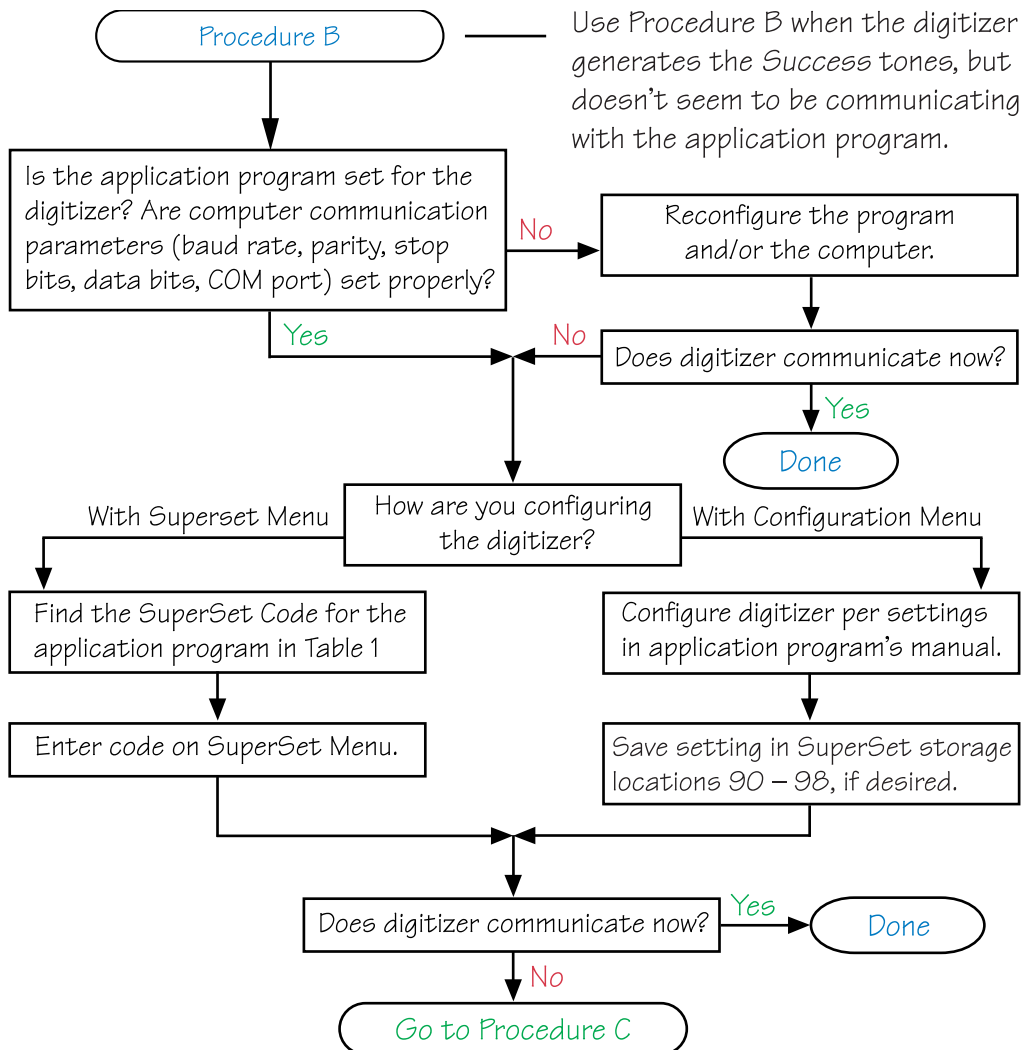
## Procedure A: Begin Troubleshooting

**Note**

This procedure should only be used to troubleshoot serial connections.



## Procedure B: Troubleshooting



This page left blank intentionally.

## Using the Tablet Configuration Utilities

If your application is not represented in the SuperSet Menu and does not have a SuperSet Code, or if a different configuration is required, you can use the Tablet Configuration Utilities to configure the Roll-Up III. The Tablet Configuration Utilities replace the 24 switches that were associated with older GTCO digitizers and the Custom Configuration Menu Card used with the Roll-Up II.

### To configure the Roll-Up III with the Tablet Configuration Utilities:

- 1 Make sure the Roll-Up III is plugged into a Serial Port, powered On, and all the tablet drivers have been uninstalled or disabled.
- 2 Install the Tablet Configuration Utilities from the *Select Utility Software to Install* section on the TabletWorks CD, or download them from [www.gtcocalcomp.com](http://www.gtcocalcomp.com).
- 3 After the installation has completed, run the *Tablet Configuration Utilities* from the **Programs** list under *GTCO CalComp TCU*.
- 4 The Tablet Configuration Utilities will begin searching the Serial Ports for a supported tablet.
  - a) If the tablet is found, information about the tablet will display under **Device Info** near the bottom of the screen.
  - b) If the tablet is not found, a message will appear under **Device Info** near the bottom of the screen.
    - i) If Wintab files were found, it is possible that the TabletWorks) driver has the Serial Port open.
    - ii) If the Serial Port is open by another application, it will not be displayed under **System Info**. Close any application, or uninstall any driver that is using the Serial Port and select *Refresh System Info* from the **File** drop-down list at the top of the screen. Click on the Serial Port icon under **System Info** to search that Serial Port.



The Tablet Configuration Utilities can use the TabletWorks driver to test the tablet, but it must be communicating directly with the tablet, via the Serial Port, in order to configure it.

- 5 Once the Roll-Up III has been found on a Serial Port, select *Advanced Configuration* from the **Options** drop-down list at the top of the screen.
  - a) If *Advanced Configuration* is not an option, make sure *Wintab Compatible Driver* is not listed under **Device Info**.

- 6 Select a predefined, 01 through 55, SuperSet Code, or select one of the User Defined, 90 through 98, SuperSet Codes to customize.
  - a) User Defined (90 through 98) SuperSet Codes are initially read from the tablet when the Advanced Configuration screen opens. This is to prevent loss of custom settings. Selecting **Read Current Settings** from the Options menu will:
    - i) Read the Power-Up settings and User Defined SuperSet Codes from the tablet.
    - ii) Overwrite all Custom Settings not yet saved to the tablet.
  - b) **Restore Factory Settings** from the Options menu will prompt for:
    - i) Power-Up settings reset to factory default and set current.
    - ii) User Defined SuperSet Codes cleared and reset to factory default.
- 7 After making your selections, choose one of the following from the **File** menu at the top of the screen.
  - a) **Save Temporary Settings** will configure the tablet as shown until the tablet is powered off, reset, or another SuperSet Code is selected.
    - i) After saving temporary settings, select **File/Exit** to test with other applications. This will leave the tablet configured to the temporary settings selected and close the Serial Port, enabling other applications to communicate with the tablet.
  - b) **Save Power-Up Settings** will configure the tablet as shown. Every time the tablet is powered off and back on, or reset, it will restore these settings.
  - c) **Save Custom Settings** will reconfigure all nine of the tablet's User Defined SuperSet Codes to the settings specified in the corresponding SuperSet Code drop-down list.
    - i) You can click on the SuperSet Menu buttons on the tablet using the tablet's cursor to activate these configurations: S plus 90 through 98.
- 8 When you have finished, select *Exit* or *Close* from the **File** menu.
  - a) *Exit* will close the Tablet Configuration Utilities.
  - b) *Close* will exit the Advanced Configuration Screen and return to the **Tablet Configuration Utilities** window.

# Regulatory Statements and Warranty

## Radio and Television Interference

The user is cautioned that any changes or modifications not expressly approved by the party responsible for compliance could void the user's authority to operate the equipment.

This equipment has been tested and found to comply with the limits of a Class B digital device, pursuant to Part 15 of the FCC rules. These limits are designed to provide reasonable protection against harmful interference in a residential installation. This equipment generates, uses and can radiate radio frequency energy and, if not installed and used in accordance with the instructions, may cause harmful interference to radio communications. However, there is no guarantee the interference will not occur in a particular installation. If this equipment does cause harmful interference to radio or television reception, which can be determined by turning the equipment off and on, the user is encouraged to try to correct the interference by one or more of the following measures:

- Reorient or relocate the receiving antenna
- Increase the separation between the equipment and the receiver
- Connect the equipment into an outlet on a circuit different from that to which the receiver is connected.
- Reorient or coil cables.
- Consult the dealer or an experienced Radio/TV technician for help.



**Any cables the user adds to the device must be shielded to be in compliance with the FCC standards. Any unauthorized modification to this device could result in the revocation of the end user's authority to operate this device.**

## Canada

This digital apparatus does not exceed the Class B limits for radio noise emissions from digital apparatus as set out in the radio interference regulations of the Canadian Department of Communications.

*Le présent appareil numérique n'émet pas bruits radioélectriques dépassant les limites applicables aux appareils numériques de Classe B prescrites dans le règlement sur le brouillage radioélectrique édicté par le Ministère des Communications du Canada.*

## Declaration of Conformity

The "CE" mark on this device indicates compliance under the EMC 89/336/EEC Directive.

Declaration of conformity according to ISO/IEC Guide 22 and EN 45014

**Manufacturer's Name:** GTCO CalComp, Inc.  
**Manufacturer's Address:** 7125 Riverwood Drive  
 Columbia, MD 21046  
 U.S.A.  
**Importer's Name:** GTCO CalComp GmbH  
**Importer's Address:** Kreiller Strasse 24  
 Munich 81673  
 Germany

declares, that the product

**Product Name:** Roll-Up III Digitizer  
**Model Numbers:** RUD3-2024, RUD3-3036, RUD3-3648  
**Product Options:** All

conforms to the following product specifications:

**Safety:** EN60950-1:2001, IEC60950:2001 IEC60950:1999-04  
 UL60950-1/CSA-C22.2 NO.60950-1-03

**EMC:** EN55022:1998, A1:2000 A2:2003  
**EMI:** EN55024:1998, A1:2000 A2:2003  
 EN 61000-3-2 Harmonic Current Emissions  
 EN 61000-3-3 Voltage Fluctuations and Flicker  
 EN 61000-4-2; Direct ESD/Indirect ESD  
 EN 61000-4-3; Radiated Susceptibility:  
 EN 61000-4-4; Electrical Fast Transients:  
 EN 61000-4-5; Surge:  
 EN 61000-4-6; Conducted RF:  
 EN 61000-4-8; Magnetic Field:  
 EN 61000-4-11; Voltage Dips and Interruptions:

**RoHS:** "-R" labelled products conform to DIRECTIVE  
 2002/95/EC. These products are RoHS-compliant.

following the provisions of Council Directive 89/336/EEC (EMC Directive) and Council Directive 73/23/EEC (Low Voltage Directive) where applicable.

Scottsdale, Arizona, U.S.A.

Location

6-15-2004

Date

Dana Doubrava

Engineering Manager



この装置は、情報処理装置等電波障害自主規制協議会（VCCI）の基準に基づくクラスB 情報技術装置です。この装置は、家庭環境で使用することを目的としていますが、この装置がラジオやテレビジョン受信機に近接して使用されると、受信障害を引き起こすことがあります。  
取扱説明書に従って正しい取り扱いをして下さい。

## Japan

### Bescheinigung des Herstellers/Importeurs

Heirmit wird bescheinigt, dass der/die/das

3036R

(Geraet, Typ, Bezeichnung)

im Uebereinstimmung mit den Bestimmungen der

Vfg 1046/1984

(Amtsblattverfuegung)

Funk-Entstort ist.

Der Deutschen Bundespost wurde das Inverkehrbringen dieses Geraetes angezeigt und die Berechtigung zur Ueberpruefung der Serie auf Einhaltung der Bestimmungen eingeräumt.

GTCO CalComp, Inc.

(Name des Herstellers/Importeurs)

Dieses Geraet wurde einzeln sowohl als auch in einer Anlage, die einen normalen Anwendungsfall nachbildet, auf die Einhaltung der Funkentstoerbestimmungen geprueft. Es ist jodoch moeglich, dass die Funkentstoerbestimmungen unter unguenstigen Umstaenden bei anderen Geraetekombinationen nicht eingehalten werden. Fuer die Einhaltung der Funkentstoerbestimmungen seiner gesamten Anlage, in der dieses Geraet betrieben wird, ist der Betreiber verantwortlich.

Einhaltung mit betreffenden Bestimmungen kommt darauf an, dass geschirmte Ausfuehrungen gebraucht werden. Fuer die beschaffung richtiger Ausfuehrungen ist der Betreiber verantwortlich.

### European Union Emission Directive

This product is in conformity with the protection requirements of EU Council Directive 89/366/ECC on the approximation of the laws of the Member States relating to electromagnetic compatibility.

This product has been tested and found to comply with the limits for Class B Information Technology Equipment according to CISPR 22/ European Standard EN55022. The limits for Class B equipment were derived for typical industrial environments to provide reasonable protection against interference with licensed communication devices.

### European Union WEEE Directive

The manufacture of this equipment required the extraction and use of natural resources. It may contain hazardous substances that could impact health and the environment.

- In order to avoid the dissemination of the hazardous substances into the environment and to diminish the pressure on our natural resources, we encourage you to return this product to the appropriate take-back system facility. These facilities reuse or recycle most of the materials in this equipment in a responsible way.
- The crossed-out wheeled bin symbol below invites you to use these take-back systems.
- If you need more information about the collection, reuse and recycling systems in your area, please contact your local or regional waste authority.
- Further information about the responsible end-of-life management of this and other GTCO CalComp products is available on our Web site at [www.gtcocalcomp.com](http://www.gtcocalcomp.com).



#### European Contact:

GTCO CalComp GmbH  
Kreiller Strasse 24  
81673 Munich  
Germany  
Tel: + 49 (0) 89 370012-0  
Fax: + 49 (0) 89 370012-12

## Limited Warranty for the Roll-Up III

GTCO CalComp, Inc. warrants these products to be free from defects in material and workmanship under the following terms. Complete and return the enclosed warranty registration card to ensure that your products are covered with this warranty.

### Coverage

Parts and labor are warranted for two (2) years from the date of the first consumer purchase for the digitizer tablet, controller, transducers, and tablet accessories. Power supply and cables are warranted for one (1) year. This warranty applies to the **original consumer purchaser only**.

Within the European Union, the warranty period is two (2) years, as mandated by the EU. Contact your local dealer or distributor for additional warranty information.

Warranty is only valid if original consumer's purchase or lease date is less than or equal to six months from the original GTCO CalComp sale date. This information will be captured by the system serial number and confirmed by the reseller's purchase order.

A nominal Warranty Handling Fee will be charged after the first year of use and calculated from the date of original consumer purchase. This payment may be made by Visa, MasterCard or American Express. A copy of the sales receipt or invoice will be required for warranty verification.

### Conditions

Except as specified below, this warranty covers all defects in material or workmanship in the products. The following are not covered by the warranty:

- 1 Any product on which the serial number has been defaced, modified or removed (if applicable).
- 2 Damage, deterioration or malfunction resulting from:
  - a Accident, misuse, abuse, neglect, fire, water, lightening or other acts of nature, unauthorized modification for any purpose, unauthorized product modification, or failure to follow instructions supplied with the product.
  - b Repair or attempted repair by anyone not authorized by GTCO CalComp.
  - c Any damage in shipment of the product (claims must be presented to the carrier).
  - d Any other cause which does not relate to a manufacturing defect.
- 3 Any product not sold or leased to a consumer within six months of GTCO CALCOMP's original sale date.

GTCO CalComp will pay all labor and material expenses for covered items, but we will not pay for the following:

- 1 Removal or installation charges.
- 2 Costs for initial technical adjustments (set up), including adjustment of user controls.
- 3 Certain shipping charges. (Payment of shipping charges is discussed in the next section of this warranty.)
- 4 Packaging costs. (Customers should keep their boxes.)

### Warranty Service Procedures

- 1 To obtain service on your GTCO CalComp product, contact the Technical Support Department to receive a Return Material Authorization Number (RMA#) and shipping instructions by calling:  
In United States: (877) 902-2979 (EST)  
In Europe: +49 (0) 89 370012-0 (CET)
- 2 Ship the product to GTCO CalComp with the RMA# marked clearly on the outside of the box. Without a clearly marked RMA# on the shipping box, GTCO CalComp reserves the right to refuse shipment.
- 3 Although you must pay any shipping charges to ship the product to GTCO CalComp for warranty service, GTCO CalComp will pay the return shipping charges for ground shipment. Other shipping options are available at an additional fee.
- 4 Whenever warranty service is required, the original dated sales invoice (or a copy) must be presented as proof of warranty coverage, and should be included in shipment of the product. Please also include your name, address, telephone number, fax number, email address, and a description of the problem.
- 5 If GTCO CalComp determines that the unit is not defective within the terms of the warranty, the consumer shall pay the cost of all freight charges, as well as any repair charges.

### Technical Support

Web-based Technical Support is available free of charge at: [www.interworldna.com](http://www.interworldna.com), where current driver releases, as well as comprehensive technical support, troubleshooting, Technical Bulletins and

FAQs can be found.

Please contact our Technical Support Department:

In United States: (410) 312-9221 (EST)  
In Europe: +49 (0) 89 370012-0 (CET)

You can also fax your request to:

In United States: (410) 290-9065 (EST)  
In Europe: +49 (0) 89 370012-12 (CET)

**Disclaimer of Unstated Warranties**

The warranty printed above is the only warranty applicable to this purchase. ALL OTHER WARRANTIES, EXPRESS OR IMPLIED, INCLUDING, BUT NOT LIMITED TO, THE IMPLIED WARRANTIES OF MERCHANTABILITY AND FITNESS FOR A PARTICULAR PURPOSE ARE DISCLAIMED. Assuming the warranty above stated is otherwise applicable, it is expressly understood and agreed that GTCO CalComp's sole liability whether in contract, tort, under any warranty, in negligence or otherwise shall be for the repair or replacement of the defective parts and under no circumstances shall GTCO CalComp be liable for special, indirect or consequential damages. The price stated and paid for the equipment is a consideration in limiting GTCO CalComp's liability.

**Notice**

Some states and provinces do not allow the exclusion or limitation of incidental or consequential damages, so the above exclusion may not apply to you. This warranty gives you specific legal rights, and you may have other rights, which vary from state to state, or province to province.

To obtain service on your GTCO CalComp product, call our Technical Support Department at (410) 312-9221 (EST), or fax us at (410) 290-9065 (EST); in Europe call +49 (0) 89 370012-0 (CET), or fax us at +49 (0) 89 370012-12 (CET).

We can also be contacted through our Web site at [www.interworldna.com](http://www.interworldna.com).

**Important!** All products returned to GTCO CalComp for service must have prior approval in the form of a Return Merchandise Number (RMA#), which can be obtained by calling the Technical Support Department.



**Corporate Headquarters**

7125 Riverwood Drive  
Columbia, Maryland 21046  
Tel: 1.425.223.4311  
Support: 1.877.902.2979  
Sales: 1.877.902.2979  
Fax: 1.877-329-4324

**European Headquarters**

GTCO CalComp GmbH  
Kreiller Strasse 24  
81673 Munich  
Germany  
Tel: + 49 (0) 89 370012-0  
Fax: + 49 (0) 89 370012-12

[www.interworldna.com](http://www.interworldna.com)

Support: 1.877.902.2979

***ROLL-UP III***™

Copyright© 2008 GTCO CalComp, Inc.

Roll-Up III is a trademark of GTCO CalComp, Inc.

All other products and company names are the trademarks or registered trademarks of their respective owners.

The information contained in this document is subject to change without notice. GTCO CalComp assumes no responsibility for technical, or editorial errors, or omissions that may appear in this document, or for the use of this material. Nor does GTCO CalComp make any commitment to update the information contained in this document. This document contains proprietary information which is protected by copyright. All rights reserved. No part of this document can be photocopied or reproduced in any form without the prior, written consent of GTCO CalComp, Inc.